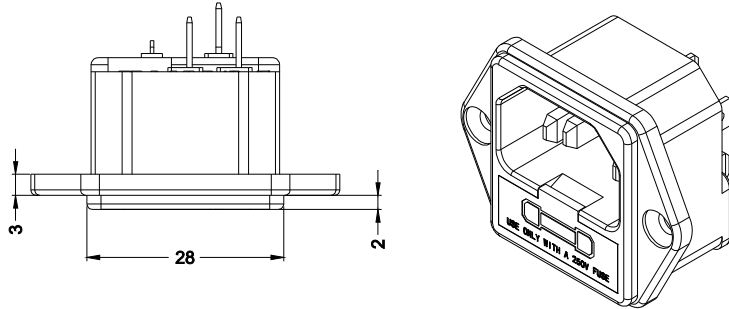
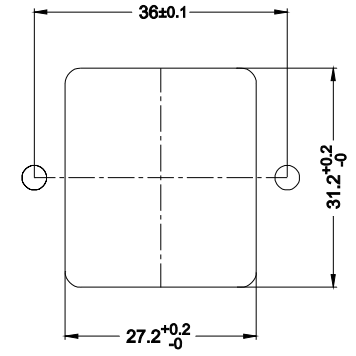
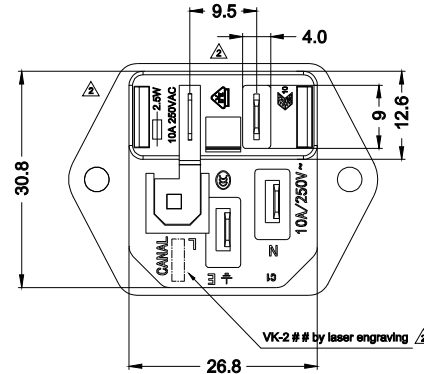
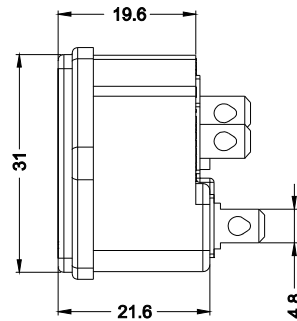
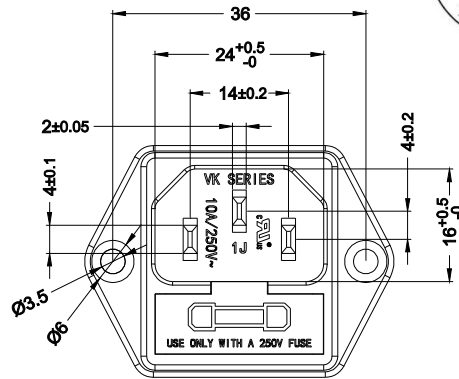
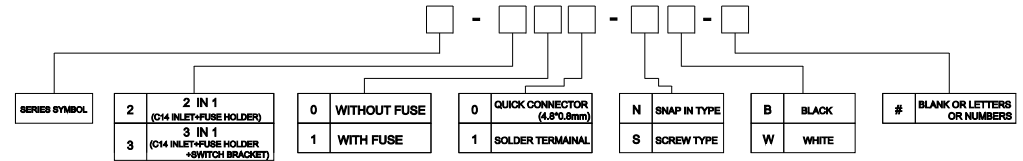


# 嘉尼企業股份有限公司 CANAL ELECTRONIC CO.,LTD.



SPECIFICATION MODEL: VK SERIES			
CERTIFICATES	C14 Inlet	FUSE HOLDER	SWITCH
STANDARD	UL / IEC / EN 60320-1 GB 17465.1 & 17465.6	IEC / EN 60127-1 & -6 GB 17465.1 & 17465.6	
	RATING	10A 250VAC	10A 250VAC / 2.5W
INSULATION RESISTANCE	100MΩ , DC 500V		
DIELECTRIC STRENGTH	2000VAC FOR 1 MINUTE BETWEEN EACH PIN		

**PART NO: VK - 2 # 1 - S # - #**



**MATERIAL:**  
**BODY / FUSE HOLDER: PA66 UL94 V-0**  
**TERMINAL: NICKEL PLATED BRASS**

**PANEL CUT-OUT**

**NOTE: TOLERANCES UNLESS OTHERWISE SPECIFIED : ± 0.3 (mm)**

REVISION	DESCRIPTION	REVISED BY	TOLERANCES		ANGLE 1/2°	UNIT	mm	PART NAME	VK SPEC DRAWING	DWG NO
△2026.05.08	增加刻字:保險絲規格,VDE or ENEC10,雷雕型號敘述	張俊雄	DRAWN BY	劉永豐	DESIGNED BY	劉永豐	SCALE	1:1	VK-2#1-S#-#	S10681B
△2026.02.03	圖面整理,更換圖號,重新出圖	張俊雄	CHECKED BY	Jimmy	APPROVED BY	DATE	2018.03.21			
△2021.10.26	依台北要求,新結構修改裝配要求;	劉永豐								
△2018.03.21	新增規格,首次出圖	劉永豐								