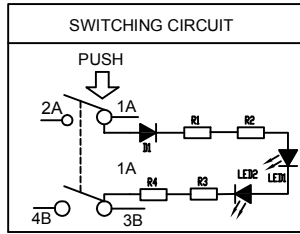
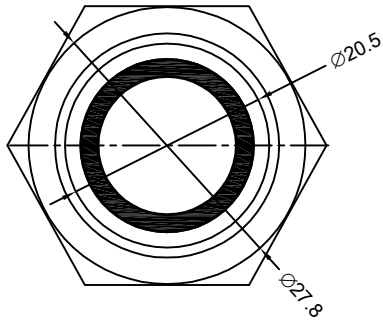


嘉尼企業股份有限公司 CANAL ELECTRONIC CO.,LTD.



SPECIFICATION MODEL : "PS5" SERIES

RATING:16(4)A 125/250V~(cURus)

16(4)A 250V~ T125/55(ENEC15/CQC)

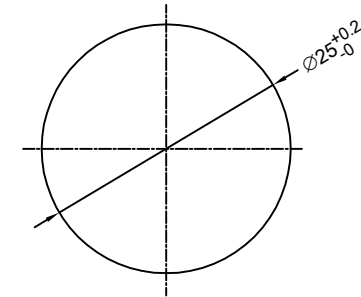
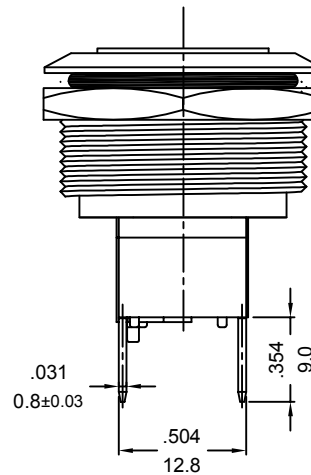
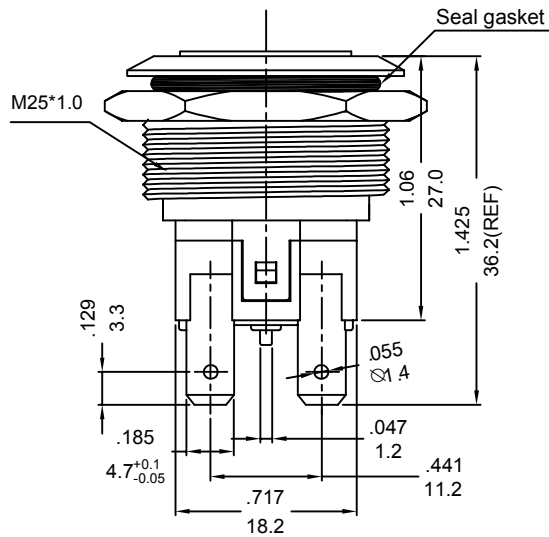
WITHSTAND VOLTAGE:1500VAC 1 MINUTE

CONTACT RESISTANCE:20mΩ INITIAL (MAX),

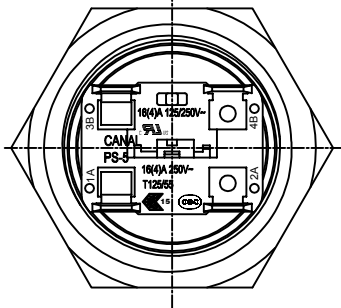
PROTECTION TYPE:IP68(PANEL WATERPROOF)

INSULATION RESISTANCE:500VDC - 100MΩ (MIN).

ILLUMINATION: 200~250VAC



Panel Cutout Ø25 mm
(Panel thickness : 7 mm MAX)



NOTE:TOLERANCES UNLESS OTHERWISE SPECIFIED:± .012/0.3 (in/mm)

REVISION	DESCRIPTION	REVISED BY	TOLERANCES	ANGLE $\frac{1}{2}$	ϕ	UNIT	mm	PART NAME	DWG NO
④			DRAWN BY 達志各	DESIGNED BY 蔡劍	SCALE	5/4		PS-5 SPEC DRAWING	S10796A
③			CHECKED BY	APPROVED BY	DATE	2026.04.17	PART NO	PS5-2103G-BUA-0RAC	
②									
①	首次出图	達志各							