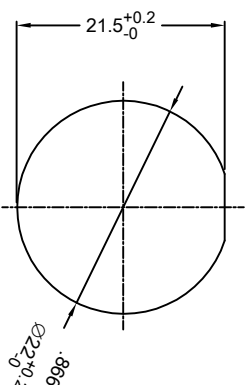
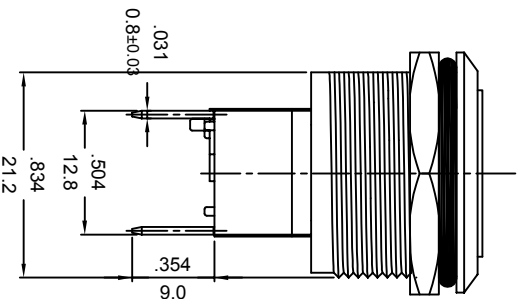
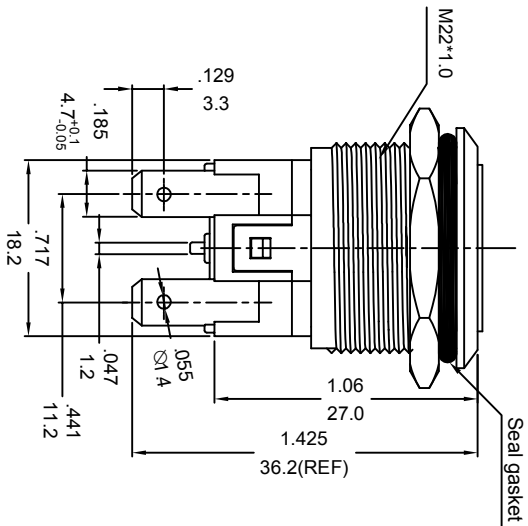
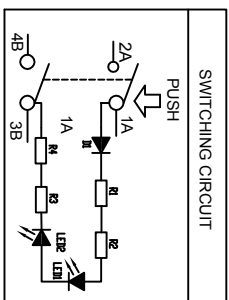
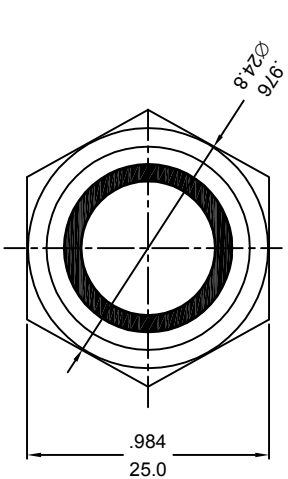
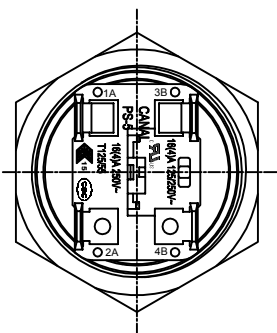


嘉尼企業股份有限公司 CANAL ELECTRONIC CO.,LTD.



Panel Cutout $\varnothing 22$ mm
(Panel thickness : 7 mm MAX)

SPECIFICATION MODEL : "PS5" SERIES
 RATING:16(4)A 125/250V~(CURus)
 16(4)A 250V~ T125/55(ENEC15/CQC)
 WITHSTAND VOLTAGE:1500VAC 1 MINUTE
 CONTACT RESISTANCE:20m Ω INITIAL (MAX),
 PROTECTION TYPE:IP68(PANEL WATERPROOF)
 INSULATION RESISTANCE:500VDC - 100M Ω (MIN).
 ILLUMINATION: 200~250VAC



NOTE:TOLERANCES UNLESS OTHERWISE SPECIFIED:±.012/0.3 (in/mm)

REVISION	DESCRIPTION	REVISED BY	TOLERANCES		DESIGNED BY	ANGLE $\frac{1}{4}$	SCALE	UNIT	mm	PART NAME	PART NO	DWG NO
			DRAWN BY	CHECKED BY								
			達志各		蔡劍		5/4			PS-5 SPEC DRAWING		S10794A
△2026.04.17	首次出圖	達志各								PS5-2102G-BUA-0RAG10		