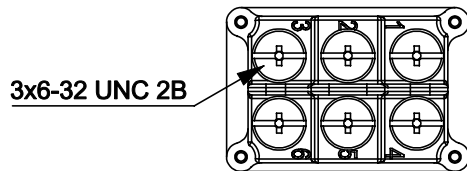
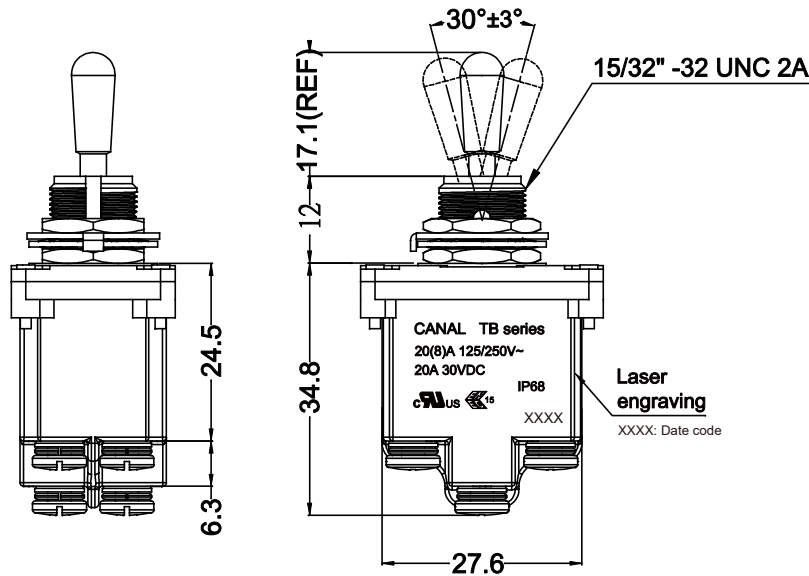
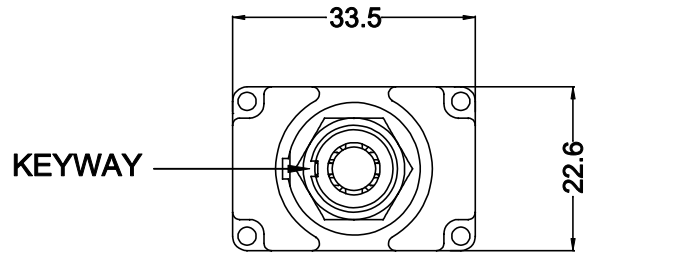
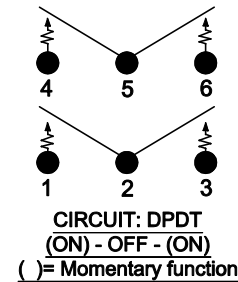


# 嘉尼企業股份有限公司 CANAL ELECTRONIC CO.,LTD.

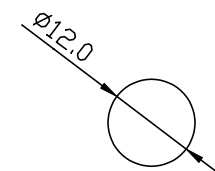


## SPECIFICATION MODEL : TB SERIES

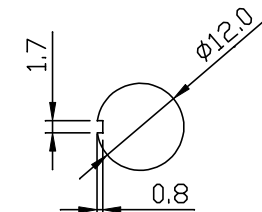
Rating: 20(8)A 125/250V~ T55  
 Electrical Life: 10,000 cycles (cURus/ENEC15)  
 Mechanical Life: 50,000 cycles  
 Contact resistance: 20mΩ Inital (MAX),  
 Insulation resistance: 500VDC - 100MΩ (MIN).  
 Dielectric Strength:  
 (1) 1500VAC For 1 minute (Terminal to Enclouse)  
 (2) 500VAC For 1 minute (Terminal to Terminal)  
 Degree of protection: IP68 (Above the panel)



SWITCH FUNCTION		
(ON)	OFF	(ON)
(1-2) (4-5)	OFF	(2-3) (5-6)



MOUNTING HOLE



WITH KEYWAY

NOTE: TOLERANCES UNLESS OTHERWISE SPECIFIED : ± .02 / 0.5 (mm).

REVISION	DESCRIPTION	REVISED BY	TOLERANCES X.X:		ANGLE 1/2°		UNIT	mm	PART NAME	SPEC DRAWING	DWG NO
			DRAWN BY	DESIGNED BY	SCALE						
△			張俊雄	王豐文	1/1						
△			Jimmy		2023.08.01						
△	首次出圖	張俊雄									
△	2023.08.01										

WS9047A

TB3-BB57-1