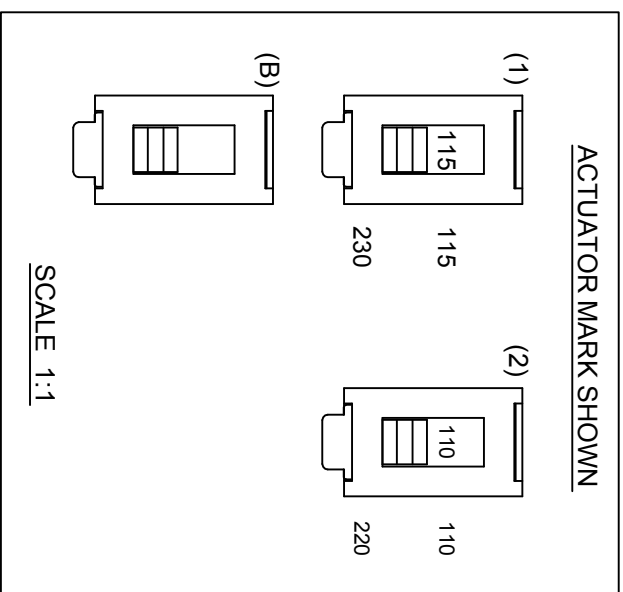
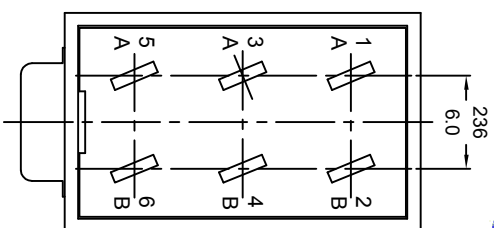
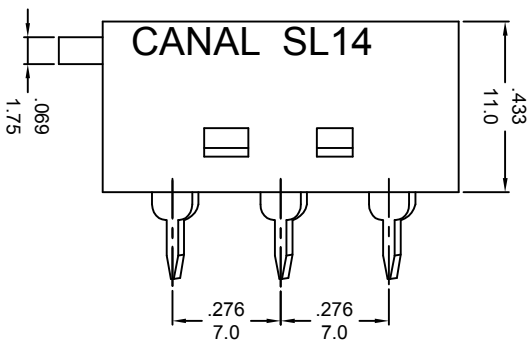
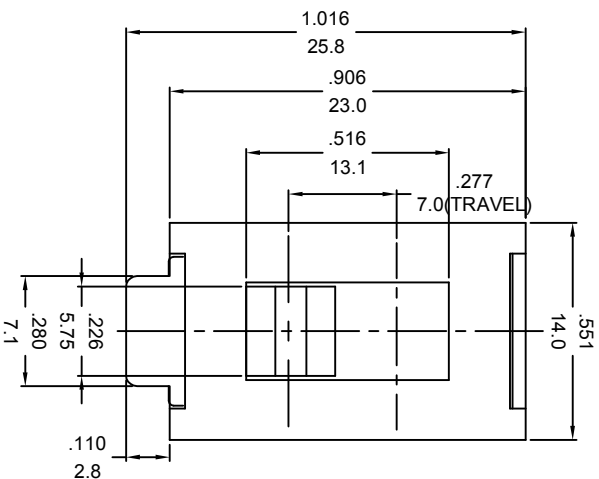


T=0.80±0.03



DSLIDE SWITCH MODEL SL14
 RATING: 12A 125/250VAC (cURus)
 4A 300VAC (cURus)
 10A 125/250VAC 6E3 (CQC)
 8(2)A 125/250V~ μT85/55 1E4 (cURus/ENEC 15)
 CONTACT RESISTANCE: 20mΩ INITIAL (MAX)
 INSULATION RESISTANCE: DC 500V 100MΩ(MIN)
 DIELECTRIC STRENGTH: 1,000VAC FOR 1 MINUTE
 BASE MATERIAL: PHENOLIC



NOTE: TOLERANCES UNLESS OTHERWISE SPECIFIED: ± .012/0.3 (In/mm)

REVISION	DESCRIPTION	REVISED BY	TOLERANCES		ANGLE	SCALE	UNIT	PART NAME	PART NO	DWG NO
			DRAWN BY	CHECKED BY						
△2023.03.07	導入UL61058-1(ENEC15)	梅偉超	向宏	向宏	弄明	2/1	mm	SL14 SPEC DRAWING		S5639C
△2018.05.04	修正Rating標示	許軒豪	向宏	向宏						
△2014.05.20	首次出圖	向宏						SL14-22AL(*F)PC		