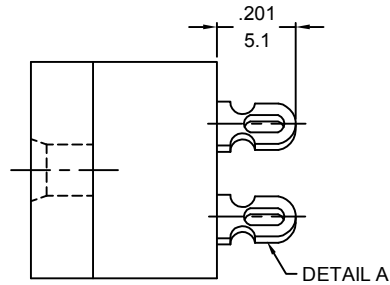
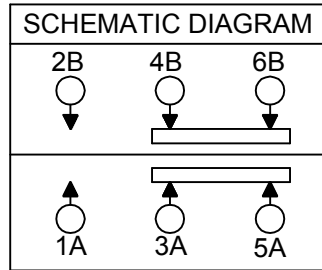
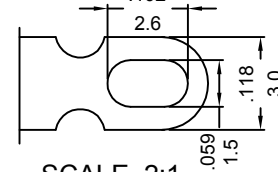


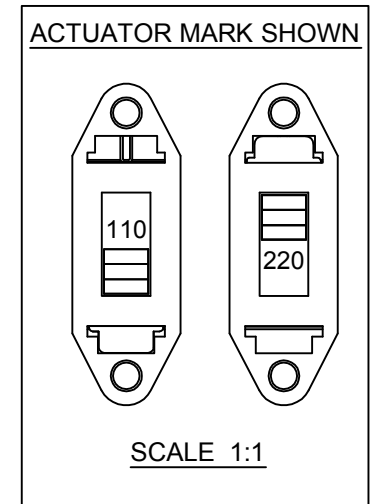
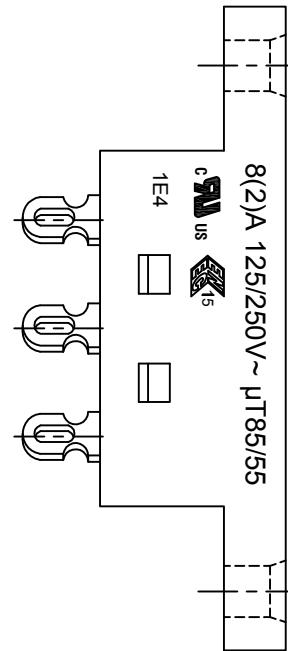
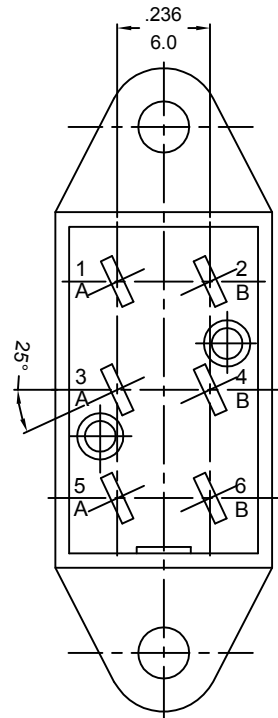
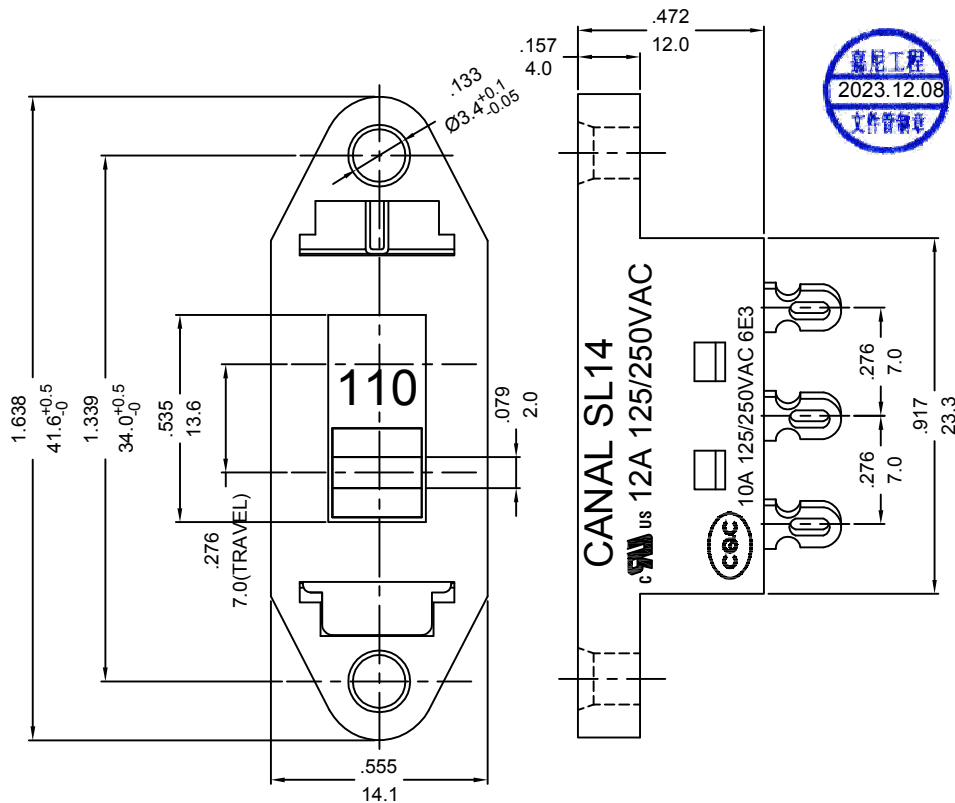
# 嘉尼企業股份有限公司 CANAL ELECTRONIC CO.,LTD.



DETAIL A: TERMINAL, thickness: 0.8±0.03mm



SLIDE SWITCH MODEL SL14  
 RATING: 12A 125/250VAC (cURus)  
 10A 125/250VAC 6E3(CQC)  
 8(2)A 125/250V~ μT85/55 1E4(cURus/ENEC15)  
 CONTACT RESISTANCE: 20mΩ INITIAL (MAX)  
 INSULATION RESISTANCE: DC 500V 100MΩ(MIN)  
 DIELECTRIC STRENGTH: 1,000VAC FOR 1 MINUTE



NOTE: TOLERANCES UNLESS OTHERWISE SPECIFIED: ± .012/0.3 (in/mm)

REVISION	DESCRIPTION	REVISED BY	TOLERANCES		ANGLE 1/2°		UNIT	mm	PART NAME	DWG NO
			DRAWN BY	DESIGNED BY	SCALE	DATE				
④			張斌	杜家裕	2/1				SL14 SPEC DRAWING	S7948B
③	2023.12.07 改為UL61058-1&ENEC15 RATING	楊偉韶	CHECKED BY	APPROVED BY	2019.12.03			PART NO	SL14-22AH(2A)NC	
②	2019.12.03 首次出圖	張斌								