

ROCKER SWITCH MODEL MR SERIES

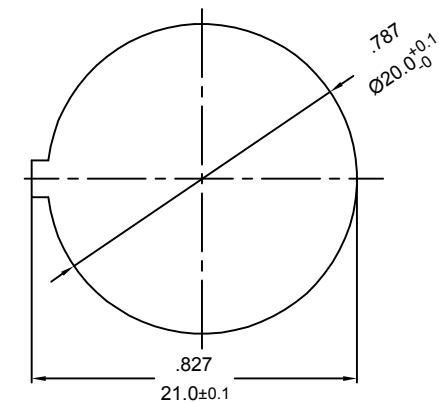
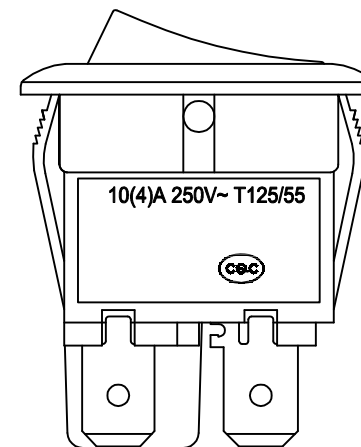
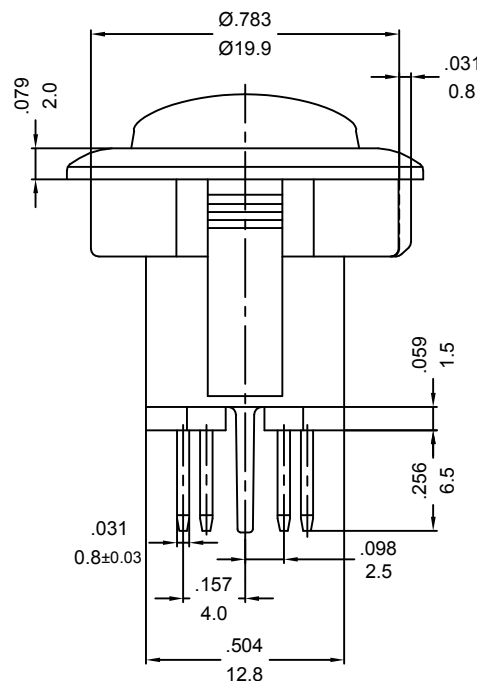
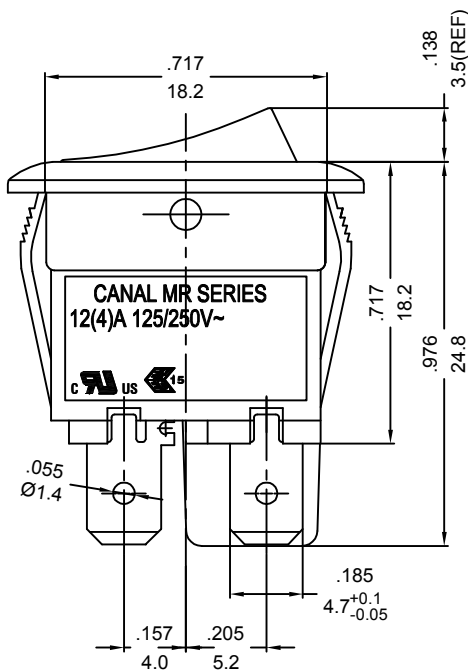
RATING:12(4)A 125/250V~ (cURus/ENEC15)

10(4)A 250V~T125/55(CQC)

DIELECTRIC WITHSTAND VOLTAGE:1500VAC FOR 1 MINUTE

INSULATION RESISTANCE:DC 500V 100MΩ (MIN)

CONTACT RESISTANCE: 20mΩ INITIAL (MAX)



PANEL THICKNESS:1.0~2.0mm

NOTE:TOLERANCES UNLESS OTHERWISE SPECIFIED:± .012/0.3 (in/mm)

REVISION	DESCRIPTION	REVISED BY	TOLERANCES		ANGLE 1/2		UNIT	mm	PART NAME	MR SPEC DRAWING	DWG NO
			DRAWN BY	DESIGNED BY	SCALE						
△			楊偉韶	蔡劍		2/1					S9608A
△											
△											
△	2023.12.15 首次出圖	楊偉韶	CHECKED BY	APPROVED BY	DATE	2023.12.15	PART NO		PART NO	MR-210R5W-NBBB-12NC	