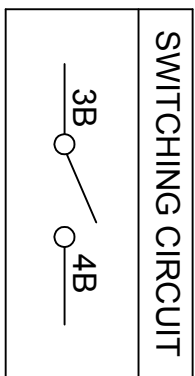
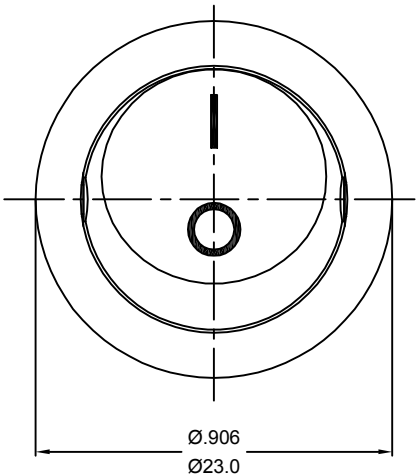
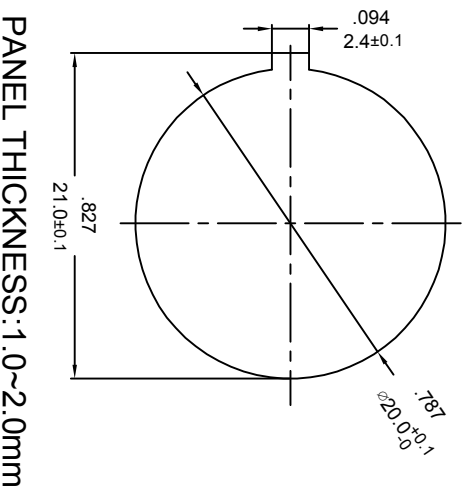
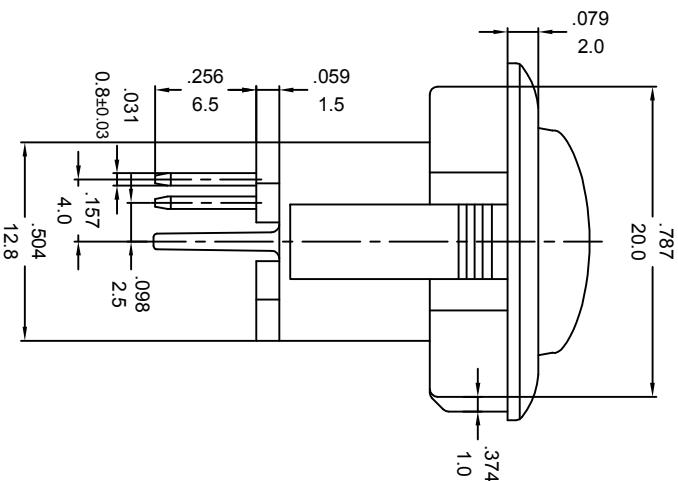
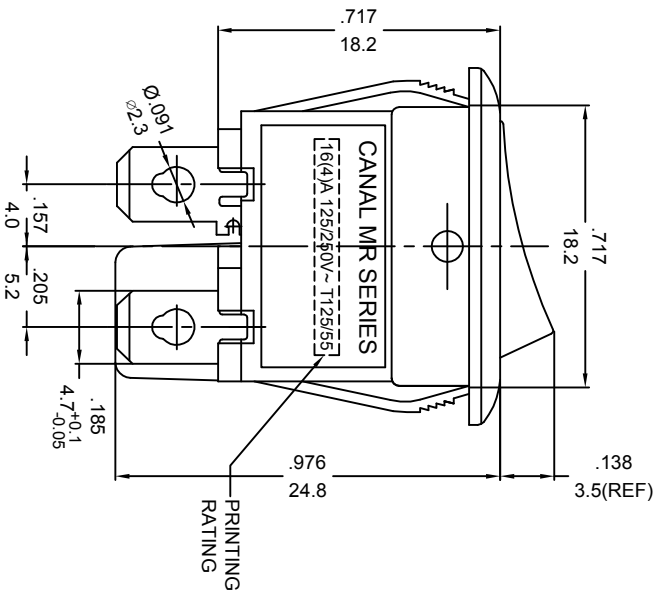


嘉尼企業股份有限公司 CANAL ELECTRONIC CO.,LTD.



ROCKER SWITCH MODEL MR SERISIE
 RATING: 16(4)A 125/250V~ T125/55 (cURus, ENEC15)
 10(4)A 250V~T125/55 (CQC)
 DIELECTRIC WITHSTAND VOLTAGE:1500VAC FOR 1 MINUTE
 INSULATION RESISTANCE:500VDC 100MΩ (MIN.)
 CONTACT RESISTANCE: 20mΩ INITIAL(MAX.)



NOTE:TOLERANCES UNLESS OTHERWISE SPECIFIED:±.012/0.3 (in/mm)

REVISION	DESCRIPTION	REVISED BY	TOLERANCES		ANGLE 1/2°	SCALE	UNIT	PART NAME	MR SPEC DRAWING	DWG NO
			DRAWN BY	CHECKED BY						
△			楊偉韶		蔡劍	2/1	mm			S8358A
△										
△										
△	首次出圖	楊偉韶				2021.01.25		MR-111R5W-NAA3-12NC(AAQAQ)		