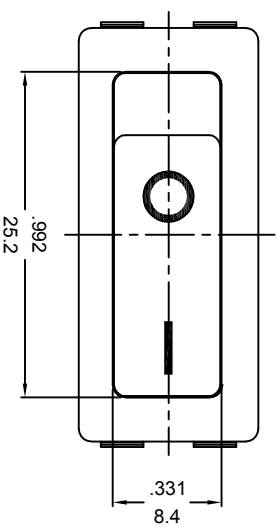
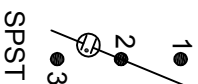


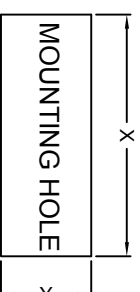
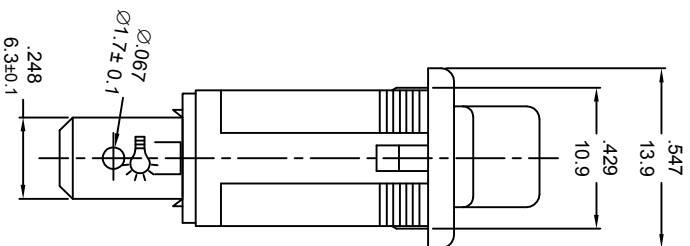
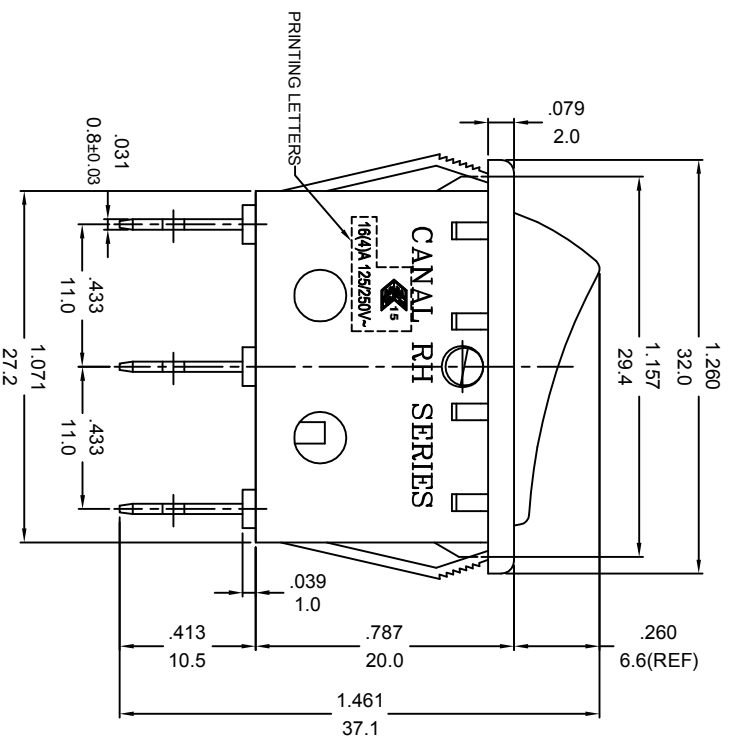
嘉尼企業股份有限公司 CANAL ELECTRONIC CO.,LTD.



Pole on/off illuminated



ROCKER SWITCH MODEL:R SERIES
 RATING: 16(4)A 125/250V~ (cURus/ENEC15)
 DIELECTRIC WITHSTAND VOLTAGE: 1500VAC 1 MINUTE
 INSULATION RESISTANCE: 500VDC 100M Ω (MIN)
 CONTACT RESISTANCE: 20m Ω INITIAL (MAX.)
 ILLUMINATION: 100~125VAC



Dim. X	Dim. Y	Z=panel thickness
30.0 ^{+0.1} ₀ mm	11.0 ^{+0.1} ₀ mm	0.75 to 1.25mm
30.2 ^{+0.1} ₀ mm	11.0 ^{+0.1} ₀ mm	1.25 to 2mm
30.5 ^{+0.1} ₀ mm	11.0 ^{+0.1} ₀ mm	2 to 3mm

NOTE:TOLERANCES UNLESS OTHERWISE SPECIFIED:± .012/0.3 (in/mm)



REVISION	DESCRIPTION	REVISED BY	TOLERANCES		ANGLE 1/2°	SCALE	UNIT	PART NAME	RH SPEC DRAWING	DWG NO
			DRAWN BY	CHECKED BY						
△			达志各			5/3	R-H10C5B-LBUA-115NC		S8323A	
△										
△										
△	2020.12.14	首次出圖	張斌			2020.12.14				