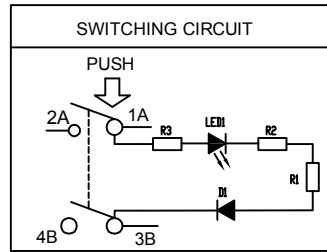
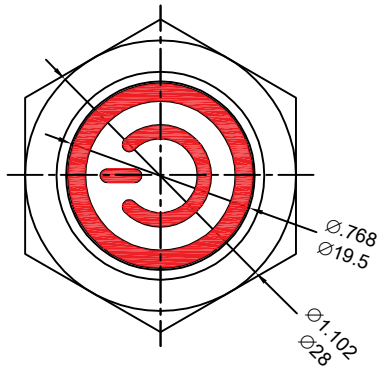


嘉尼企業股份有限公司 CANAL ELECTRONIC CO.,LTD.



SPECIFICATION MODEL : "PS5" SERIES

RATING:16(4)A 125/250V~(cURus/ENEC15)

16(4)A 250V~ T125/55(CQC)

WITHSTAND VOLTAGE:1500VAC 1 MINUTE

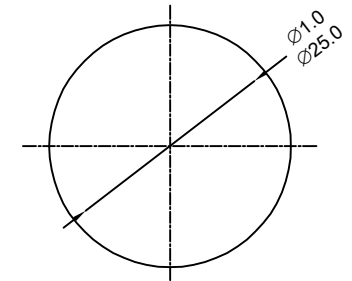
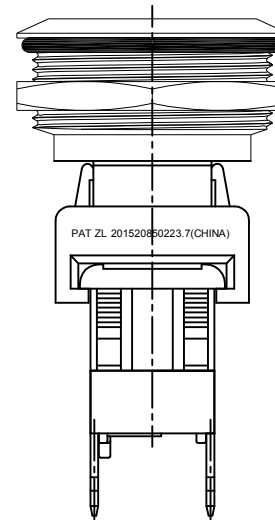
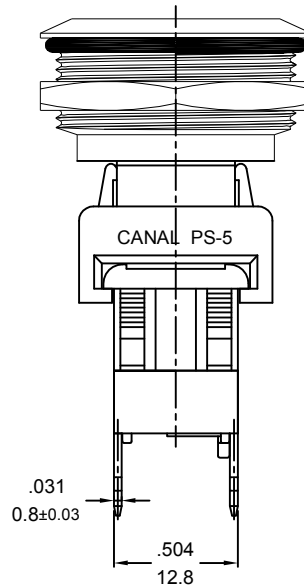
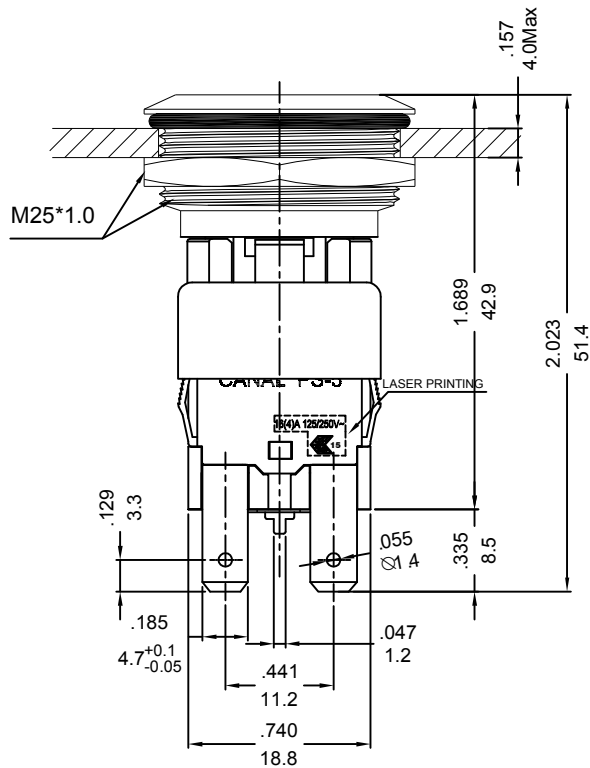
CONTACT RESISTANCE:20mΩ INITIAL (MAX),

PROTECTION TYPE:IP65(PANEL WATERPROOF)

MECHANICAL COLLISION PROTECTION TYPE:IK07

INSULATION RESISTANCE:500VDC - 100MΩ (MIN).

ILLUMINATION: 100~125VAC



PANEL MOUNTING

NOTE:TOLERANCES UNLESS OTHERWISE SPECIFIED:± .012/0.3 (in/mm)

REVISION	DESCRIPTION	REVISED BY	TOLERANCES		ANGLE 1/2		UNIT	mm	PART NAME	PS5 SPEC DRAWING	DWG NO
			DRAWN BY	DESIGNED BY	SCALE						
△			達志各	蔡劍			5/4				S8968A
△			CHECKED BY	APPROVED BY	DATE		2022.08.09	PART NO	PS5-210RL-BUA-0PAF6		
△	2022.08.09 首次出圖	達志各									