

**SPECIFICATION MODEL : PK SERIES**

Rating: 6A 125/250V~μ5E4 (cURus/ENEC15)

6A 3~48VDC μ3E4 (cURus/ENEC15)

Contact Resistance: 50mΩ (max.) initial

Insulation Resistance: 100M Ω (min)

Dielectric Strength: 500VAC for 1 minute

Mechanical Life: 1,000,000 cycles

Operation Force: 350g ± 150g

Total Travel: 3.2mm (max)

Protection Level: IP68, IK10 ( Above the panel )

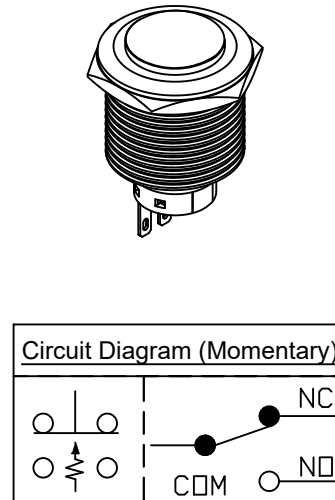
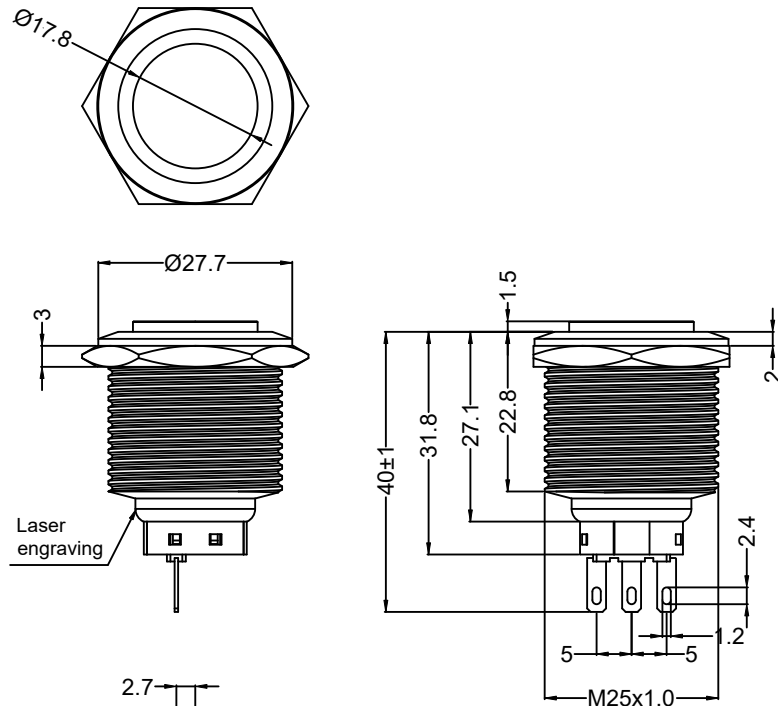
Shell Material: Stainless Steel

**Description of LED color and voltage :**

PK-25M13HNNNSS-ANNN



LED COLOR		LED VOLTAGE	
N	NO COLOR	N	NO ILLUMINATED
R	RED	2	DC 6V
G	GREEN	L	AC 110V
U	BULE	3	DC 12V
W	WHITE	G	AC 220V
Y	YELLOW	4	DC 24V
		1	DC 2V (Red, Yellow)
		5	DC 30V
		6	DC 48V (Green, Bule, White)



Accessories package	
Silicon o-ring	Hex nuts
Accessories are not locked when shipped	

Panel Cutout Ø25 mm  
(Panel thickness : 14 mm MAX)

Laser engraving

CANAL PK Series 6A 125/250V~μ5E4 cURUS 15

NOTE: TOLERANCES UNLESS OTHERWISE SPECIFIED : ± 0.5 (mm).

REVISION	DESCRIPTION	REVISED BY	TOLERANCES	ANGLE 1/2	UNIT	mm	PART NAME	SPEC DRAWING	DWG NO
△			DRAWN BY	范修銓	DESIGNED BY	范修銓	SCALE	1/1	PART NO
△			CHECKED BY	ERIC	APPROVED BY	DATE	2021.12.20	PK-25M13HNNNSS-ANNN	
△	2023.12.08	料號變更, 原料號 PK-25M13HNNNS-ANNN	范修銓						WS4833A
△	2022.01.25	首次出圖	范修銓						