

1

2

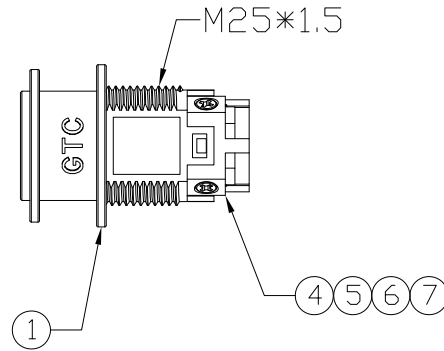
3

4

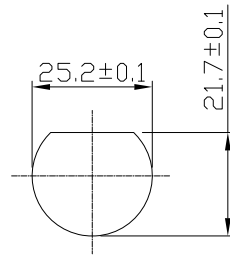
Notes: (Unless Otherwise Specified)

- 1. Waterproof Rate: IP67.
- 2. Recommend Panel Thickness: 0.8 to 6.0 mm.
- 3. Recommend Hex Nut Torque: 19~20 Kgf-cm.
- 4. RoHS Compliant.

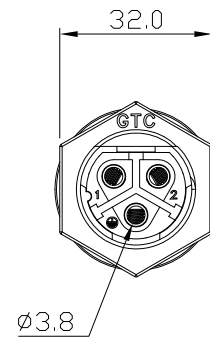
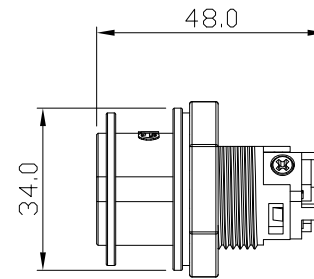
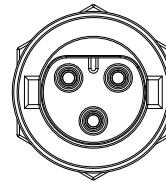
REV	ECN#	DESCRIPTION OF REVISION	DRAW BY DATE	CHECK BY DATE	APPROVE BY DATE
01			Lucas 05/15/14	Ray 05/15/14	Ray 05/15/14



GTC  
R&D DEPT. ISSUE  
MAY.27.2014  
ONLY FOR  
RELEASE



Recommend  
Panel Cut-Out



Item	Part Name	Material / Finish	Qty
7	Machine Screw	SUS303	3
6	Fixed lid Female 3P	Thermoplastic Color: Black	1
5	Terminal	Copper Alloy Finish: Sn Plated	3
4	Contacts	Copper Alloy Finish: Ni Plated	3
3	Hex Nut	Thermoplastic Color: Black	1
2	Gasket	Silicone Color: Black	1
1	Housing	Thermoplastic Color: Black	1

TITLE					DRAWING NUMBER			REV.	
Power M25 30A 3P Field Installable Panel Female Screw-in Push Lock					GT1E2400-41030			01	
 DO NOT SCALE DRAWINGS	B	1:1	Lucas 05/15/14	Ray 05/15/14	Ray 05/15/14	X.X ± 0.5	X.XXX ± 0.05	mm	1/1
	THIRD ANGLE PROJECTION	SIZE	SCALE	DRAW / DATE	CHECK / DATE	APPROVE / DATE	TOLERANCES	UNIT	SHEET

GT Contact CO.,LTD

NOTICE OF PROPRIETARY PROPERTY:

THE INFORMATION CONTAINED HEREIN IS THE PROPRIETARY PROPERTY OF GT Contact CO.,LTD THE POSSESSOR AGREES TO THE FOLLOWING:

- (i) TO MAINTAIN THIS DOCUMENT IN CONFIDENCE
- (ii) NOT TO REPRODUCE OR COPY IT
- (iii) NOT TO REVEAL OR PUBLISH IT IN WHOLE OR PART
- (iv) ALL RIGHTS RESERVED

1

2

3

4