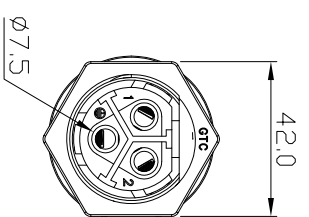
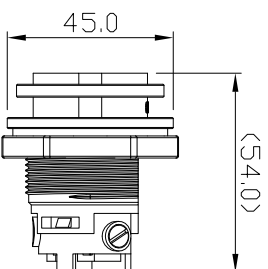
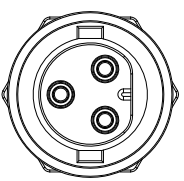
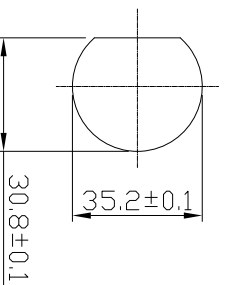
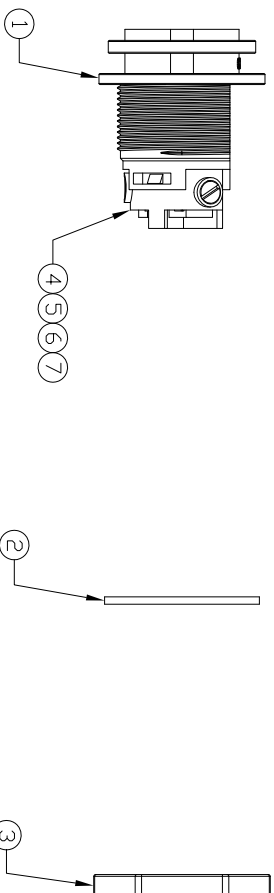


- Notes: (Unless Otherwise Specified)
1. Waterproof Rate: IP67.
  2. Recommend Panel Thickness: 0.8 to 6.0 mm.
  3. Recommend Hex Nut Torque: 9~10 Kgf-cm.
  4. RoHS Compliant.

REV	ECN#	DESCRIPTION OF REVISION	DRAW BY DATE	CHECK BY DATE	APPROVE BY DATE
A0	ECN-130105	Mass Production	Lucas 01/10/13	Roy 01/10/13	Roy 01/10/13

GTC  
DOC.CENTER.ISSUE  
JAN.15.2013  
ONLY FOR  
RELEASE



Recommend  
Panel Cut-Out

Item	Part Name	Material / Finish	Qty
7	Machine Screw	S15C Finish: Ni Plated	3
6	Fixed lid Female 3P	Thermoplastic Color: Black	1
5	Terminal	Copper Alloy Finish: Sn Plated	3
4	Contacts	Copper Alloy Finish: Ni Plated	3
3	Hex Nut	Thermoplastic Color: Black	1
2	Gasket	Silicone Color: Black	1
1	Housing	Thermoplastic Color: Black	1

TITLE  
Power M35 41A 3P Field Installable Panel Female Screw-in Push Lock

DRAWING NUMBER  
GT1E1400-42030

REV.  
A0

DD NOT SCALE DRAWINGS	B	1:1	Lucas 06/14/12	Roy 06/14/12	Roy 06/14/12	XXX ± 0.5 ANGLES ± 1°	mm	1/1
THIRD ANGLE PROJECTION	SIZE	SCALE	DRAW / DATE	CHECK / DATE	APPROVE / DATE	TOLERANCES	UNIT	SHEET

GT Contact CO.,LTD

NOTICE OF PROPRIETARY PROPERTY

THE INFORMATION CONTAINED HEREIN IS THE PROPRIETARY PROPERTY OF GT Contact CO.,LTD THE POSSESSOR AGREES TO THE FOLLOWING

① TO MAINTAIN THIS DOCUMENT IN CONFIDENCE

② NOT TO REPRODUCE OR PUBLISH IT IN WHOLE OR PART

③ ALL RIGHTS RESERVED

A

B

C

D

1

2

3

4

1

2

3

4

A

B

C

D