

1

2

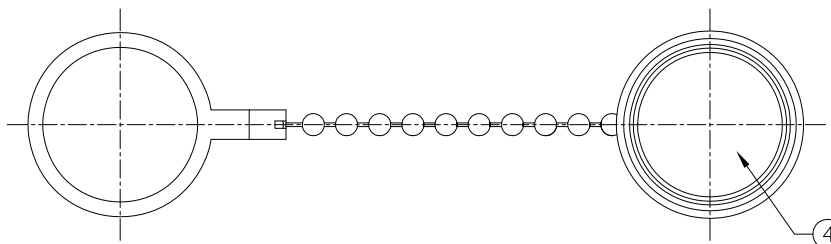
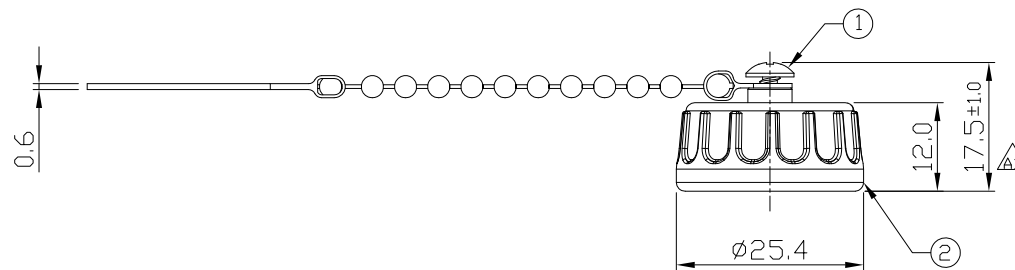
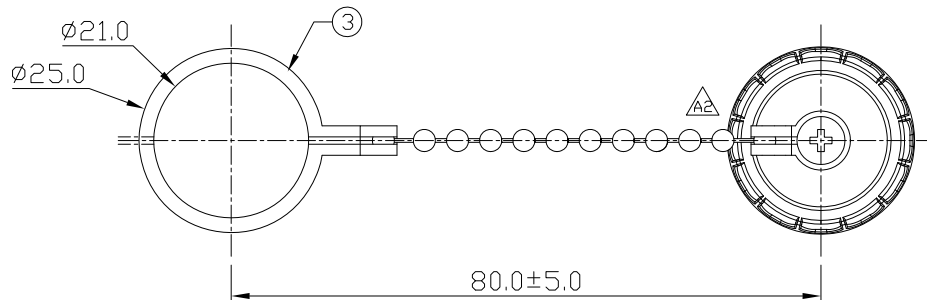
3

4

Notes: (Unless Otherwise Specified)

- 1. Waterproof Rate : IP67.
- 2. RoHS Compliant.

REV	ECN#	DESCRIPTION OF REVISION	DRAW BY DATE	CHECK BY DATE	APPROVE BY DATE
A0		Mass Production	Joyce 01/25/13	Lucas 01/25/13	Ray 01/25/13
A1	ECN-131117	Modified Screw Cap $\Delta A1$	Joyce 11/05/13	Lucas 11/05/13	Ray 11/05/13
A2	ECN-140101	Marked $\Delta A2$	Joyce 01/13/14	Lucas 01/13/14	Ray 01/13/14



GTC
DOC.CENTER.ISSUE
JAN.17.2014
ONLY FOR
RELEASE

4	Rubber Pad	Silicone Color: Black	1
3	Metal Chain	Stainless Finish: -	1
2	Screw Cap	Thermoplastic Color: Black	1
1	Tapping Screw	Stainless Finish: -	1
Item	Part Name	Material / Finish	Q'TY

$\Delta A1$

TITLE						DRAWING NUMBER			REV.		
Cap Plastic For C3 Screw Panel With Metal Chain						GT1C533112			A2		
	B	1:1	Joyce 09/17/12	Lucas 09/17/12	Ray 09/17/12	X.X X.XX	± 0.5 ± 0.2	X.XXX ANGLES	± 0.05 ± 1°	mm	1/1
THIRD ANGLE PROJECTION	SIZE	SCALE	DRAW / DATE	CHECK / DATE	APPROVE / DATE	TOLERANCES		UNIT	SHEET		

GT Contact CO.,LTD

NOTICE OF PROPRIETARY PROPERTY:
THE INFORMATION CONTAINED HEREIN IS THE PROPRIETARY PROPERTY OF GT Contact CO.,LTD THE POSSESSOR AGREES TO THE FOLLOWING:
(i) TO MAINTAIN THIS DOCUMENT IN CONFIDENCE
(ii) NOT TO REPRODUCE OR COPY IT
(iii) NOT TO REVEAL OR PUBLISH IT IN WHOLE OR PART
(iv) ALL RIGHTS RESERVED

1

2

3

4