

1

2

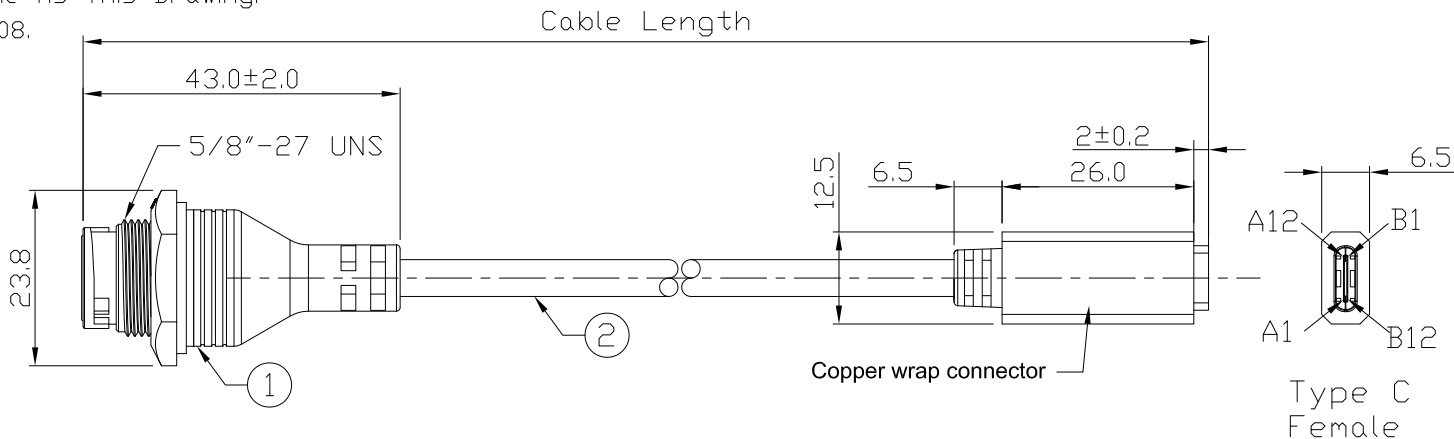
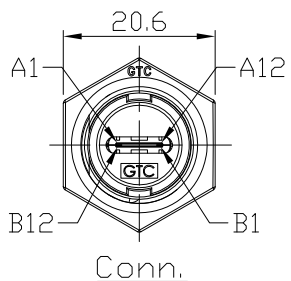
3

4

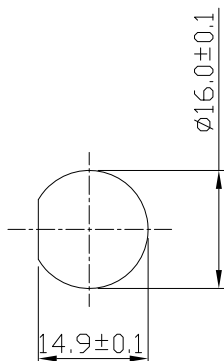
Notes: (Unless Otherwise Specified)

- 1. Waterproof Rate: IP67.
- 2. Recommend Panel Thickness: 0.8 to 3.0 mm.
- 3. Recommend Torque: 9~10 Kgf-cm.
- 4. Mating Cap P/N: GT1C1210X2.
- 5. RoHS Compliant.
- 6. Type C -Pin Out Is The Same As This Drawing.
- 7. UL Certification file #E364108.

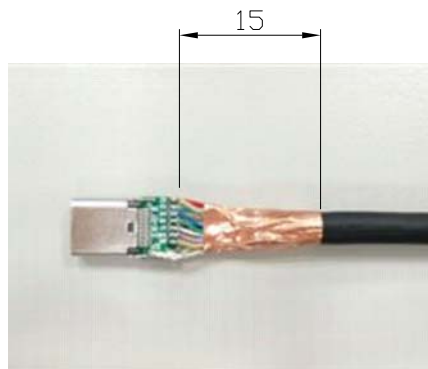
REV	ECN#	DESCRIPTION OF REVISION	DRAW BY DATE	CHECK BY DATE	APPROVE BY DATE
01			Lucas 07/19/21	Lucas 07/19/21	Ray 07/19/21



GTC
DOC.CENTER.ISSUE
JUL.19.2021
ONLY FOR
RELEASE



Recommend
Panel Cut-Out



編織需跟雙面導電銅箔導通跟PCB板距離4-5mm

GT11C210-02-02	2000 mm	+100
GT11C210-02-01	1000 mm	+50
GT11C210-02-Z9	900 mm	+50
GT11C210-02-Z8	800 mm	+50
GT11C210-02-Z7	700 mm	+50
GT11C210-02-Z6	600 mm	+50
GT11C210-02-Z5	500 mm	+50
GT11C210-02-Z4	400 mm	+50
GT11C210-02-Z3	300 mm	+25
GT11C210-02-Z2	200 mm	+25
GT11C210-02-Z1	100 mm	+25
Part No.	Cable Length	Tol.

2	Cable	UL21572 (1P/32#+EAM)*4+(1P/32#+A)+(4C/32#)+(1C/24#)+2EAB 85% DD:4.8mm BLACK TPE JACKET.	1
1	USB 3.1 Type C Plastic C2 Cable To Cable Jack Lock	GT Contact P/N: GT11C210-02-XX	1
Item	Part Name	Material / Finish	Q'TY

TITLE						DRAWING NUMBER			REV.
USB 3.1 Type C Plastic C2 Cable To Cable Jack Lock With Type C Female						GT11C210-02-XX			01
	B	1:1	Lucas 07/19/21	Lucas 07/19/21	Ray 07/19/21	X.X ± 0.5 X.XX ± 0.2	X.XXX ± 0.05 ANGLES ± 1°	mm	1/2
THIRD ANGLE PROJECTION	SIZE	SCALE	DRAW / DATE	CHECK / DATE	APPROVE / DATE	TOLERANCES		UNIT	SHEET

GT Contact CO.,LTD

NOTICE OF PROPRIETARY PROPERTY:
THE INFORMATION CONTAINED HEREIN IS THE PROPRIETARY PROPERTY OF GT CONTACT CO.,LTD THE POSSESSOR AGREES TO THE FOLLOWING:
(A) TO MAINTAIN THIS DOCUMENT IN CONFIDENCE
(B) NOT TO REPRODUCE OR COPY IT
(C) NOT TO REVEAL OR PUBLISH IT IN WHOLE OR PART
(D) ALL RIGHTS RESERVED

1

2

3

4

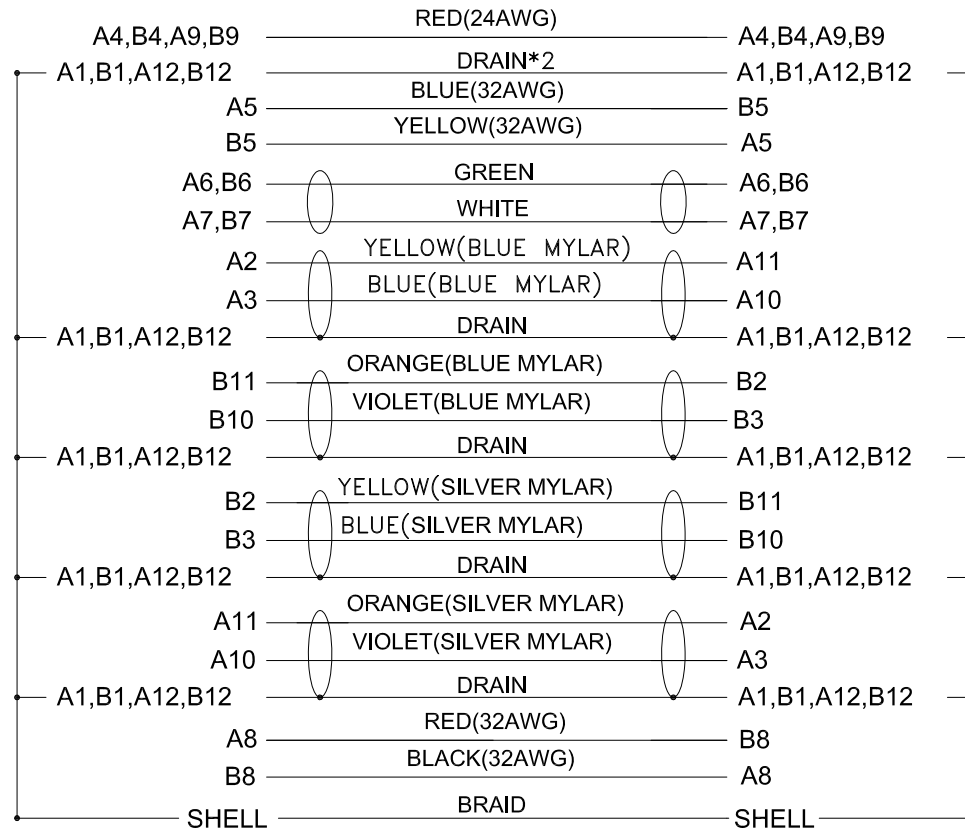
1

2

3

4

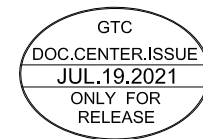
REV	ECN#	DESCRIPTION OF REVISION	DRAW BY DATE	CHECK BY DATE	APPROVE BY DATE
01			Lucas 07/19/21	Lucas 07/19/21	Ray 07/19/21



Conn.

Type C Female

Wiring Diagram



GT Contact CO.,LTD

NOTICE OF PROPRIETARY PROPERTY:

THE INFORMATION CONTAINED HEREIN IS THE PROPRIETARY PROPERTY OF GT Contact CO.,LTD THE POSSESSOR AGREES TO THE FOLLOWING:
 (i) TO MAINTAIN THIS DOCUMENT IN CONFIDENCE
 (ii) NOT TO REPRODUCE OR COPY IT
 (iii) NOT TO REVEAL OR PUBLISH IT IN WHOLE OR PART
 (iv) ALL RIGHTS RESERVED

TITLE USB 3.1 Type C Plastic C2 Cable To Cable Jack Lock With Type C Female						DRAWING NUMBER GT11C210-02-XX			REV. 01
	B	1:1	Lucas 07/19/21	Lucas 07/19/21	Ray 07/19/21	X.X ± 0.5 X.XX ± 0.2	X.XXX ± 0.05 ANGLES ± 1°	mm	2/2
THIRD ANGLE PROJECTION	SIZE	SCALE	DRAW / DATE	CHECK / DATE	APPROVE / DATE	TOLERANCES		UNIT	SHEET

1

2

3

4