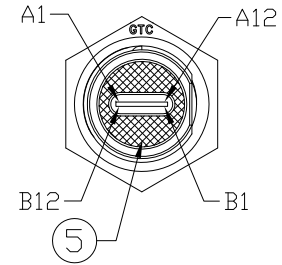
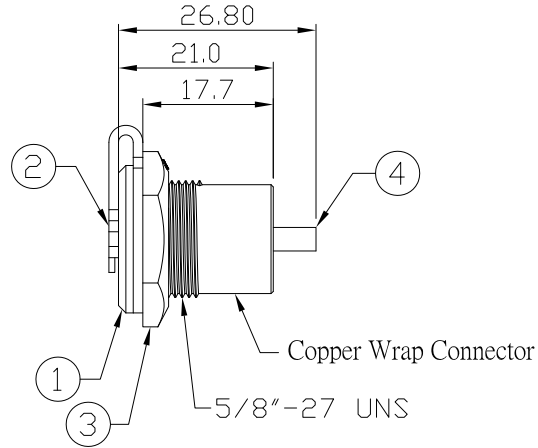
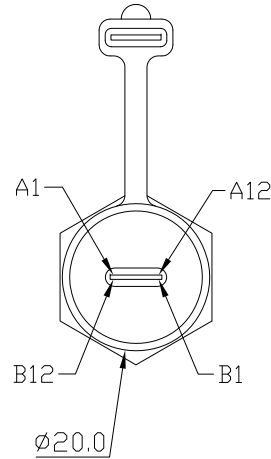


Notes: (Unless Otherwise Specified)

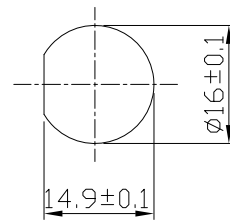
- 1. Waterproof Rate: IP67.
- 2. Recommend Panel Thickness: 0.8 to 3.0 mm.
- 3. Recommend Torque: 9~10 Kgf-cm.
- 4. RoHS Compliant.
- 5. Type C AB面接點需跟圖面一致.
- 6. UL Certitied #E364108.

REV	ECN#	DESCRIPTION OF REVISION	DRAW BY DATE	CHECK BY DATE	APPROVE BY DATE
01			Lucas 01/13/20	Lucas 01/13/20	Ray 01/13/20

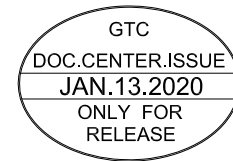
A4,B4,A9,B9	_____	A4,B4,A9,B9
SHELL,A1,B1,A12,B12	_____	SHELL,A1,B1,A12,B12
A2	_____	A2
B2	_____	B2
A3	_____	A3
B3	_____	B3
A5	_____	A5
B5	_____	B5
A6,B6	_____	A6,B6
A7,B7	_____	A7,B7
A8	_____	A8
B8	_____	B8
A10	_____	A10
B10	_____	B10
A11	_____	A11
B11	_____	B11



Wiring Diagram



Recommend Panel Cut-Out



Item	Part Name	Material / Finish	Q'ty
5	Glue	Epoxy Color: Black	
4	USB Type C 3.1	Housing: Thermoplastic, Color: Black	2
		Contacts: Copper Alloy, Finish: Au Plated	
		Shell: Stainless Steel, Finish: Au Plated	
3	Hex Nut	Thermoplastic Color: Black	1
2	Cap	Silicone Color: Black	1
1	Housing	Thermoplastic Color: Black	1

TITLE USB 3.1 Type C Plastic C2 Panel Jack Lock Coupler						DRAWING NUMBER GT11C401-30-C			REV. 01	
THIRD ANGLE PROJECTION		SIZE B	SCALE 1:1	DRAW / DATE Lucas 01/13/20	CHECK / DATE Lucas 01/13/20	APPROVE / DATE Ray 01/13/20	TOLERANCES X.X ± 0.5 X.XX ± 0.2		UNIT mm	SHEET 1/1

GT Contact CO.,LTD

NOTICE OF PROPRIETARY PROPERTY:
THE INFORMATION CONTAINED HEREIN IS THE PROPRIETARY PROPERTY OF GT Contact CO.,LTD THE POSSESSOR AGREES TO THE FOLLOWING:
(i) TO MAINTAIN THIS DOCUMENT IN CONFIDENCE
(ii) NOT TO REPRODUCE OR COPY IT
(iii) NOT TO REVEAL OR PUBLISH IT IN WHOLE OR PART
(iv) ALL RIGHTS RESERVED