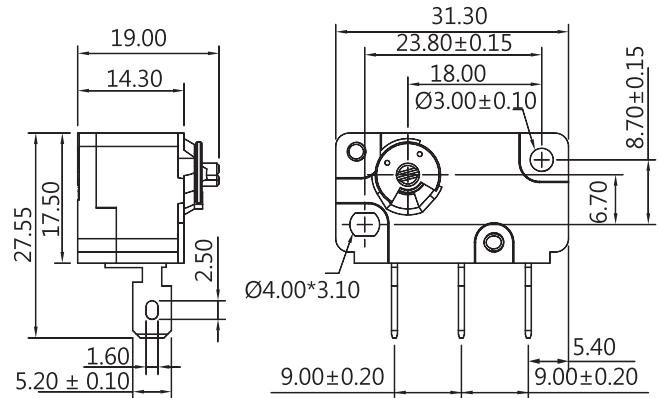

**DIMENSIONS**

 Unless otherwise specified, a tolerance of  $\pm 0.4\text{mm}$  applies to all dimensions.


## CNR SERIES

**SPECIFICATIONS**
**Insulation Resistance ( at 500VDC/minute )**

 Min. 100M $\Omega$ 
**Dielectric Strength**

Min. 1000VAC(50-60HZ)/minute between Live parts.

Min. 1500VAC(50-60HZ)/minute between Live parts and dead metal parts

**Operating Temperature Range**

05 series -40°C to 65°C (with no icing)

P1 series -40°C to 85°C (with no icing)

**Vibration**

10~55 Hz, displacement 0.75 mm(p-p)

**Electrical Service Life**

Min. 6,000 operations

**Electrical Operating Frequency**

10~30 operations per minute

**Mechanical Service Life**

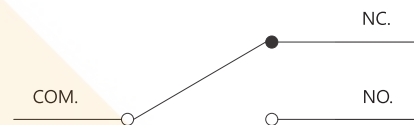
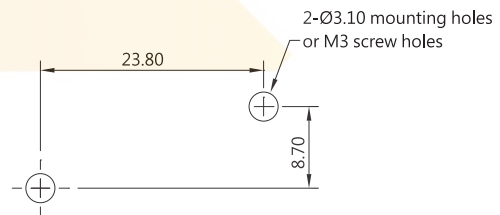
Min. 10,000,000 operations

**Mechanical Operating Frequency**

120 operations per minute

**TYPICAL APPLICATIONS**

Low Torque Applications, Vending Machines, Coin Operated Machines, Industrial

**CONTACT CONFIGURATION**

**MOUNTING HOLES**

**CERTIFICATE INFORMATION**

Model Name	UL, cUL
CNR-P1 CNR-05	0.1A 30VDC 1A 125/250 VAC 5A 125/250VAC Temp:85°C Min. 6,000 operations

**OPERATING CHARACTERISTICS**

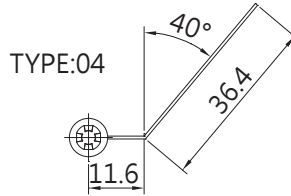
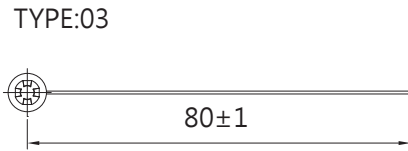
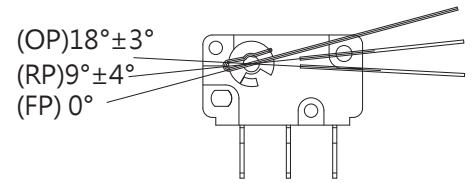
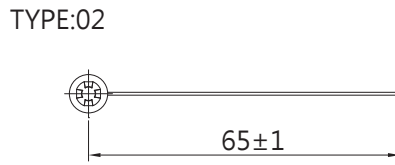
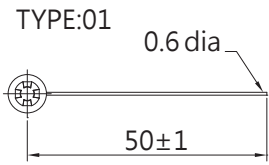
Type	L	S	H
Operating Force(OF)Max	5.1 gf	7.6 gf	10.2 gf
Releasing Force(RF)Min.	0.6 gf	0.9 gf	1.3 gf
Operating Position(OP)	18 $\pm$ 3°		
Releasing Position(RP)	9 $\pm$ 4°		

**THE SELECTION OF RATING & FORCE**

MODEL	Rating	L	S	H
CNR	0.1A	*	*	*
	1A	*	*	*
	5A	*	*	*

NOTE : The Symbol " \* " to represent the result is accepted

ACTUATOR TYPES



ORDERING INFORMATION

C	N
SERIES PREFIX	

R	ACTUATOR DIRECTION
R	CLOCKWISE

0	5	RATING CURRENT
P1	0.1A	125VAC
05	1A,5A	125/250VAC

S	OPERATING TORQUE Max.
L	5.1gf-cm
S	7.6gf-cm
H	10.2gf-cm

0	3	ACTUATOR TYPE
01	TYPE:01	
02	TYPE:02	
03	TYPE:03	
04	TYPE:04	

Z	ROHS CODE
---	-----------

#NOTE		
ITEM	RATING CURRENT	OPERATING FORCE
1	Code:P1	L,S,H
2	Code:05	L,S,H