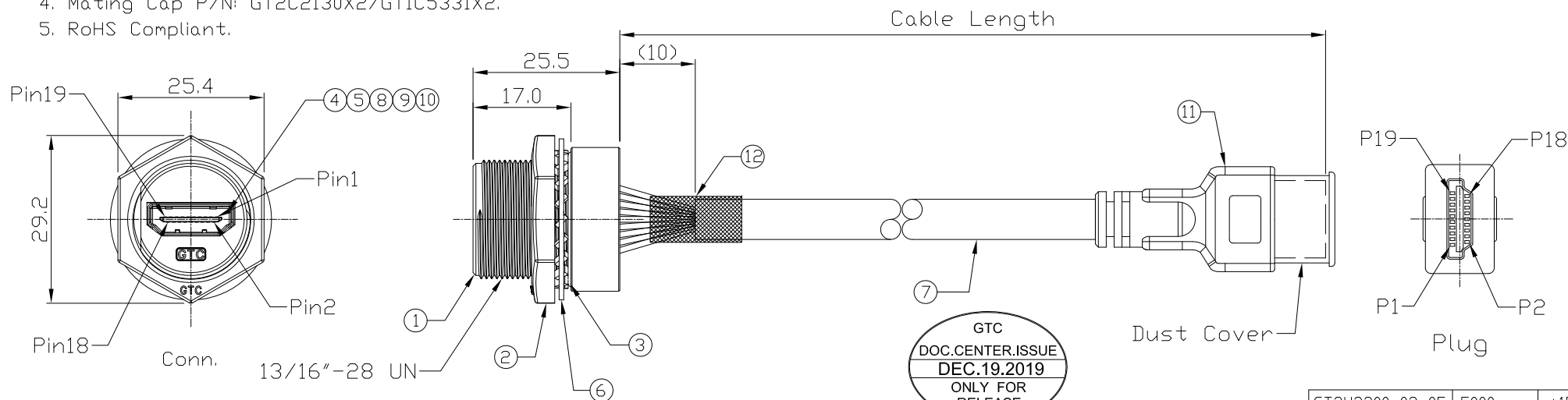


Notes: (Unless Otherwise Specified)

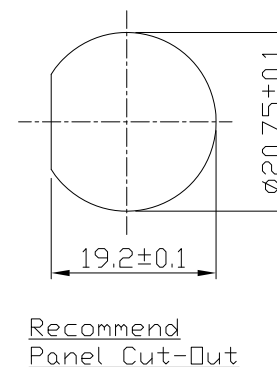
1. Waterproof Rate: IP68.
2. Recommend Panel Thickness: 0.8 to 4.5 mm.
3. Recommend Torque: 19~20 Kgf-cm.
4. Mating Cap P/N: GT2C2130X2/GT1C5331X2.
5. RoHS Compliant.

REV	ECN#	DESCRIPTION OF REVISION	DRAW BY DATE	CHECK BY DATE	APPROVE BY DATE
02	ECN-191205	Change Cable (REV: 1.3 => REV: 1.4)	Whitney 12/13/19	Lucas 12/13/19	Ray 12/13/19



GTC
DOC.CENTER.ISSUE
DEC.19.2019
ONLY FOR
RELEASE

Part No.	Cable Length	Tol.
GT2H2300-02-05	5000 mm	+150
GT2H2300-02-04	4000 mm	+150
GT2H2300-02-03	3000 mm	+150
GT2H2300-02-02	2000 mm	+100
GT2H2300-02-01	1000 mm	+50
GT2H2300-02-Z9	900 mm	+50
GT2H2300-02-Z8	800 mm	+50
GT2H2300-02-Z7	700 mm	+50
GT2H2300-02-Z6	600 mm	+50
GT2H2300-02-Z5	500 mm	+50
GT2H2300-02-Z4	400 mm	+50
GT2H2300-02-Z3	300 mm	+25
GT2H2300-02-Z2	200 mm	+25



Item	Part Name	Material / Finish	Q'ty
12	Shrink Tube	L=20mm Color: Black	1
11	HDMI Male	HDMI 19P Male IDC Type Color: Black	1
10	Glue	Epoxy Color: Black	
9	Hold	Silicone Color: Black	1
8	PCB	FR-4 Color: Green	1
7	Cable	UL20276 [(28#/1PR+EAM)*5+(28#/4C)+AB85% Color: Black, OD=7.3mm	1
6	Metal Washer	SUS	1
5	EMI Shielded Plate	Copper Finish: Ni Plated	1
4	HDMI Receptacle	Housing: Thermoplastic, Color: Black Contacts: Copper Alloy, Finish: Au Plated Shell: Copper Alloy, Finish: Ni Plated	1
3	O-Ring	Silicone Color: Red	1
2	Hex Nut	Zn Alloy Finish: Ni Plated	1
1	Housing	Zn Alloy Finish: Ni Plated	1

Conn.	Color	Pin	Plug
1	White	1	10
2	Drain	2	11
3	Brown	3	12
4	White	4	13
5	Drain	5	15
6	Red	6	16
7	White	7	18
8	Drain	8	14
9	Green	9	17
			19
			Shell

Wiring Diagram

TITLE						DRAWING NUMBER			REV.
HDMI C3 Metal C3 Panel Jack Screw With HDMI Plug						GT2H2300-02-XX			02
THIRD ANGLE PROJECTION	SIZE	SCALE	DRAW / DATE	CHECK / DATE	APPROVE / DATE	TOLERANCES	UNIT	SHEET	
DD NOT SCALE DRAWINGS	B	1:1	Lucas 03/07/16	Lucas 03/07/16	Ray 03/07/16	X.X ± 0.5 X.XX ± 0.2	mm	1/1	
						X.XXX ± 0.05 ANGLES ± 1°			

GT Contact CO.,LTD

NOTICE OF PROPRIETARY PROPERTY:

THE INFORMATION CONTAINED HEREIN IS THE PROPRIETARY PROPERTY OF GT CONTACT CO.,LTD THE POSSESSOR AGREES TO THE FOLLOWING:

(A) TO MAINTAIN THIS DOCUMENT IN CONFIDENCE

(B) NOT TO REPRODUCE OR COPY IT

(C) NOT TO REVEAL OR PUBLISH IT IN WHOLE OR PART

(D) ALL RIGHTS RESERVED