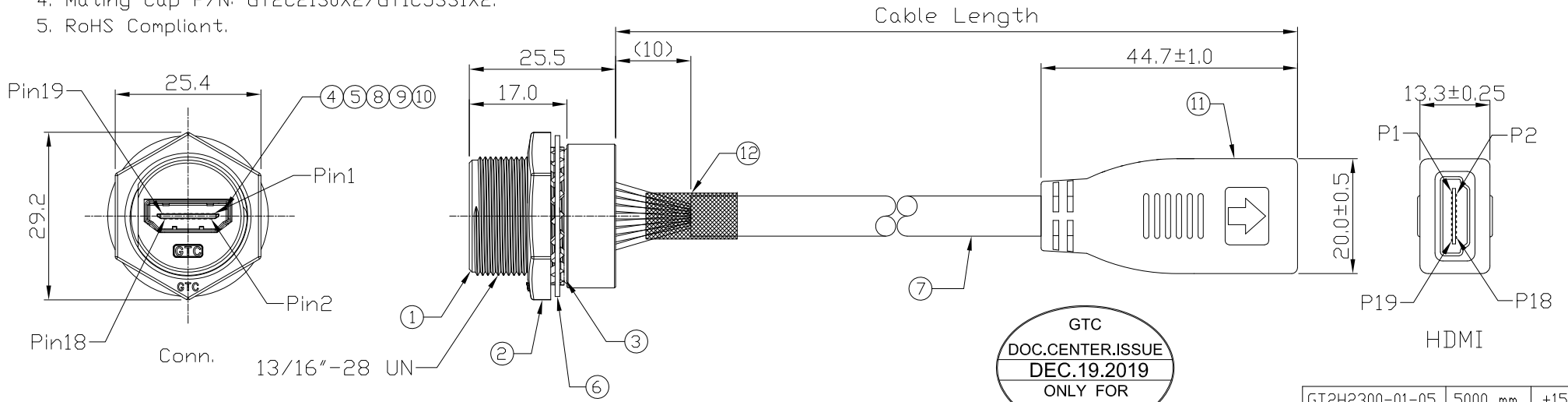


Notes: (Unless Otherwise Specified)

1. Waterproof Rate: IP68.
2. Recommend Panel Thickness: 0.8 to 4.5 mm.
3. Recommend Torque: 19~20 Kgf-cm.
4. Mating Cap P/N: GT2C2130X2/GT1C5331X2.
5. RoHS Compliant.

REV	ECN#	DESCRIPTION OF REVISION	DRAW BY DATE	CHECK BY DATE	APPROVE BY DATE
02	ECN-191205	Change Cable (REV: 1.3 => REV: 1.4)	Whitney 12/13/19	Lucas 12/13/19	Ray 12/13/19

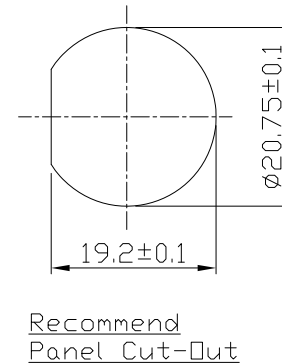


GTC
DOC.CENTER.ISSUE
DEC.19.2019
ONLY FOR
RELEASE

GT2H2300-01-05	5000 mm	+150
GT2H2300-01-04	4000 mm	+150
GT2H2300-01-03	3000 mm	+150
GT2H2300-01-02	2000 mm	+100
GT2H2300-01-01	1000 mm	+50
GT2H2300-01-Z9	900 mm	+50
GT2H2300-01-Z8	800 mm	+50
GT2H2300-01-Z7	700 mm	+50
GT2H2300-01-Z6	600 mm	+50
GT2H2300-01-Z5	500 mm	+50
GT2H2300-01-Z4	400 mm	+50
GT2H2300-01-Z3	300 mm	+25
GT2H2300-01-Z2	200 mm	+25
Part No.	Cable Length	Tol.

Conn.	Color	Qty	HDMI	Color	Qty
1	White	1	10	White	10
2	Drain	2	11	Drain	11
3	Brown	3	12	Blue	12
4	White	4	13	Red	13
5	Drain	5	15	White	15
6	Red	6	16	Purple	16
7	White	7	18	Black	18
8	Drain	8	14	White	14
9	Green	9	17	Drain	17
			19	Orange	19
			Shell	Braid	Shell

Wiring Diagram



Item	Part Name	Material / Finish	Qty
12	Shrink Tube	L=20mm Color: Black	1
11	HDMI Female	HDMI 19P Female IDC Type Color: Black	1
10	Glue	Epoxy Color: Black	1
9	Hold	Silicone Color: Black	1
8	PCB	FR-4 Color: Green	1
7	Cable	UL20276 [(28#/1PR+EAM)*5+(28#/4C)]+AB85% Color: Black, OD=7.3mm	1
6	Metal Washer	SUS	1
5	EMI Shielded Plate	Copper Finish: Ni Plated	1
4	HDMI Receptacle	Housing: Thermoplastic, Color: Black Contacts: Copper Alloy, Finish: Au Plated Shell: Copper Alloy, Finish: Ni Plated	1
3	O-Ring	Silicone Color: Red	1
2	Hex Nut	Zn Alloy Finish: Ni Plated	1
1	Housing	Zn Alloy Finish: Ni Plated	1

TITLE						DRAWING NUMBER			REV.
HDMI C3 Metal C3 Panel Jack Screw With HDMI Receptacle						GT2H2300-01-XX			02
THIRD ANGLE PROJECTION	SIZE	SCALE	DRAW / DATE	CHECK / DATE	APPROVE / DATE	X.X ± 0.5 X.XX ± 0.2	X.XXX ± 0.05 ANGLES ± 1°	mm	1/1
						TOLERANCES		UNIT	SHEET

GT Contact CO.,LTD

NOTICE OF PROPRIETARY PROPERTY:
THE INFORMATION CONTAINED HEREIN IS THE PROPRIETARY PROPERTY OF GT Contact CO.,LTD THE POSSESSOR AGREES TO THE FOLLOWING:
(A) TO MAINTAIN THIS DOCUMENT IN CONFIDENCE
(B) NOT TO REPRODUCE OR COPY IT
(C) NOT TO REVEAL OR PUBLISH IT IN WHOLE OR PART
(D) ALL RIGHTS RESERVED