

1

2

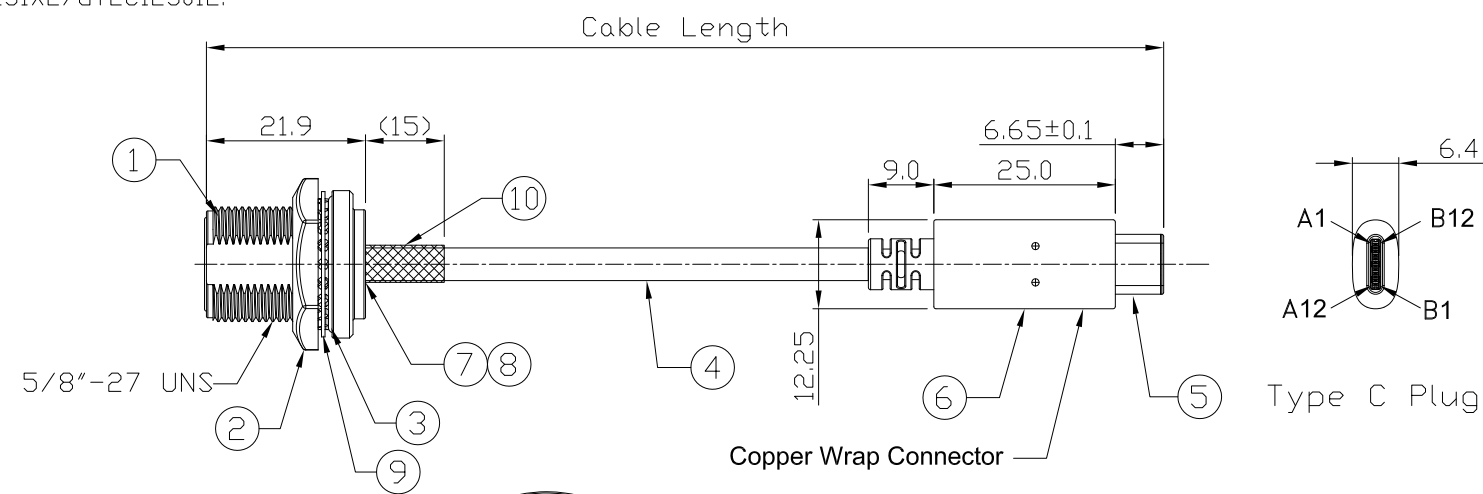
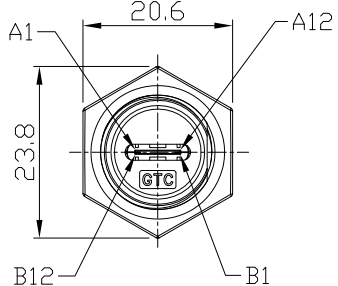
3

4

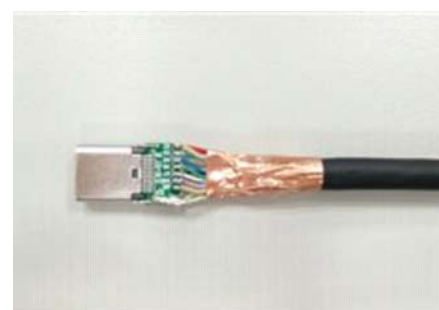
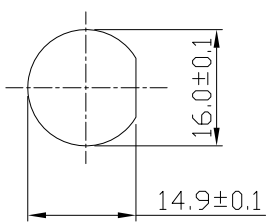
Notes: (Unless Otherwise Specified)

- 1. Waterproof Rate: IP68.
- 2. Recommend Panel Thickness: 0.8 to 6.0 mm.
- 3. Recommend Torque: 19~20 Kgf-cm.
- 4. Mating Cap P/N: GT1C5231X2/GT2C123012.
- 5. RoHS Compliant.
- 6. Type C AB面接點需跟圖面一致.
- 7. UL Certified #E364108.

REV	ECN#	DESCRIPTION OF REVISION	DRAW BY DATE	CHECK BY DATE	APPROVE BY DATE
05	ECN-190839	Change Wire&Mylar Color	Lucas 08/30/19	Lucas 08/30/19	Ray 08/30/19



GTC  
DOC.CENTER.ISSUE  
SEP.02.2019  
ONLY FOR  
RELEASE



編織需跟雙面導電銅箔導通跟PCB板距離4~5mm

Part No.	Cable Length	Tol.
GT21C300-01-02	2000 mm	+100
GT21C300-01-01	1000 mm	+50
GT21C300-01-Z9	900 mm	+50
GT21C300-01-Z8	800 mm	+50
GT21C300-01-Z7	700 mm	+50
GT21C300-01-Z6	600 mm	+50
GT21C300-01-Z5	500 mm	+50
GT21C300-01-Z4	400 mm	+50
GT21C300-01-Z3	300 mm	+25
GT21C300-01-Z2	200 mm	+25
GT21C300-01-Z1	100 mm	+25

Item	Part Name	Material / Finish	Qty
10	Shrink Tube	L=20mm, Heat Shrink Tube With Adhesive Lined Color: Black	1
9	Metal Washer	SUS Finish:-	1
8	EMI Shielded Plate	Copper Alloy Finish: Ni Plated	1
7	Glue	Epoxy Color: Black	
6	Over Mold	PVC Color: Black	1
5	USB Type C 3.1	Housing: Thermoplastic, Color: Black Contacts: Copper Alloy, Finish: Au Plated Shell: Stainless Steel, Finish: Au Plated	1
4	Cable	UL21572 (1P/32#+EAM)*4+(1P/32#+A)+(4C/32#)+1C/24#+2EAB 85% DD:4.8mm BLACK TPE JACKET.	1
3	O-Ring	Silicone Color: Red	1
2	Hex Nut	Zn Alloy Finish: Ni Plated	1
1	Housing	Zn Alloy Finish: Ni Plated	1

Front View  
Recommend  
Panel Cut-Out

GT Contact CO.,LTD

TITLE					DRAWING NUMBER			REV.
USB 3.1 Type C Metal C2 Panel Jack Screw With Type C Plug					GT21C300-01-XX			05
THIRD ANGLE PROJECTION		SIZE	SCALE	DRAW / DATE	CHECK / DATE	APPROVE / DATE	TOLERANCES	SHEET
DO NOT SCALE DRAWINGS		B	1:1	Lucas 12/14/16	Ray 12/14/16	Ray 12/14/16	XX ± 0.5 X.XX ± 0.2	1/3
							X.XXX ± 0.05 ANGLES ± 1°	

NOTICE OF PROPRIETARY PROPERTY:  
THE INFORMATION CONTAINED HEREIN IS THE PROPRIETARY PROPERTY OF GT CONTACT CO.,LTD THE POSSESSOR AGREES TO THE FOLLOWING:  
(1) TO MAINTAIN THIS DOCUMENT IN CONFIDENCE  
(2) NOT TO REPRODUCE OR COPY IT  
(3) NOT TO REVEAL OR PUBLISH IT IN WHOLE OR PART  
(4) ALL RIGHTS RESERVED

1

2

3

4

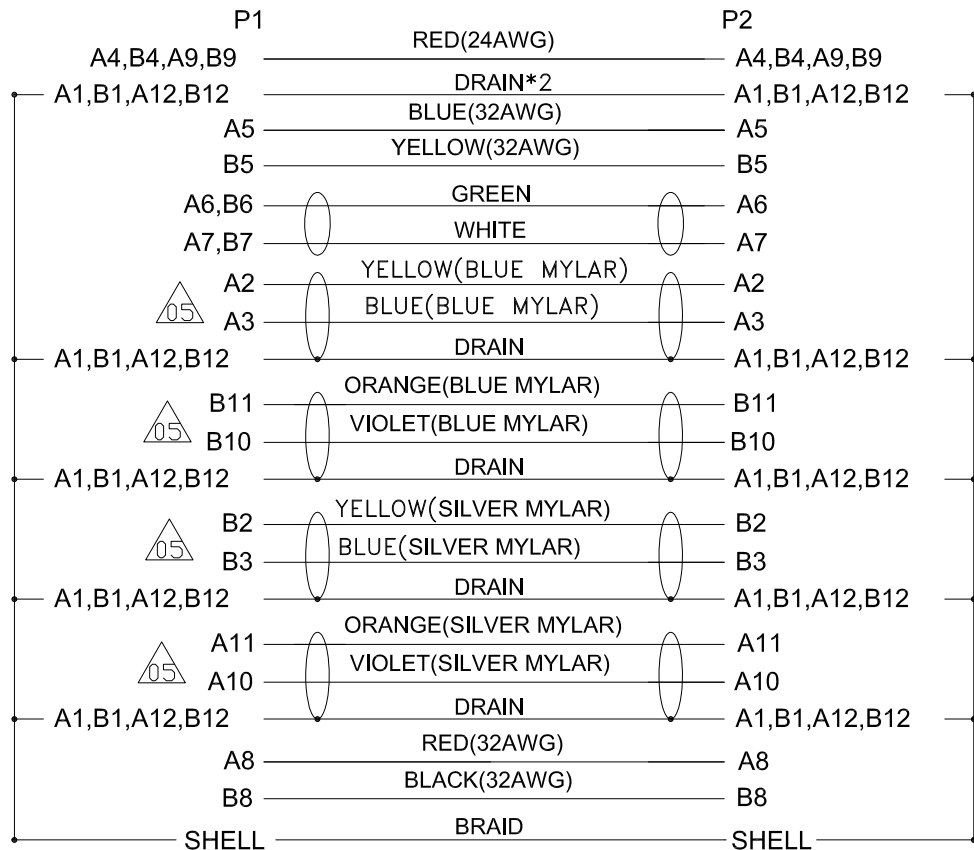
1

2

3

4

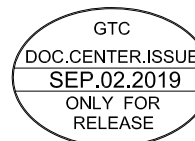
REV	ECN#	DESCRIPTION OF REVISION	DRAW BY DATE	CHECK BY DATE	APPROVE BY DATE
05	ECN-190839	Change Wire&Mylar Color	Lucas 08/30/19	Lucas 08/30/19	Ray 08/30/19



Conn.

Type C Plug

Wiring Diagram



TITLE USB 3.1 Type C Metal C2 Panel Jack Screw With Type C Plug						DRAWING NUMBER GT21C300-01-XX		REV. 05	
THIRD ANGLE PROJECTION 	SIZE B	SCALE 1:1	DRAW / DATE Lucas 12/14/16	CHECK / DATE Ray 12/14/16	APPROVE / DATE Ray 12/14/16	TOLERANCES X.X ± 0.5 X.XX ± 0.2	ANGLES X.XXX ± 0.05 X.X ± 1°	UNIT mm	SHEET 2/3

GT Contact CO.,LTD

NOTICE OF PROPRIETARY PROPERTY:  
THE INFORMATION CONTAINED HEREIN IS THE PROPRIETARY PROPERTY OF GT Contact CO.,LTD THE POSSESSOR AGREES TO THE FOLLOWING:  
(i) TO MAINTAIN THIS DOCUMENT IN CONFIDENCE  
(ii) NOT TO REPRODUCE OR COPY IT  
(iii) NOT TO REVEAL OR PUBLISH IT IN WHOLE OR PART  
(iv) ALL RIGHTS RESERVED

1

2

3

4

1

2

3

4

REV	ECN#	DESCRIPTION OF REVISION	DRAW BY DATE	CHECK BY DATE	APPROVE BY DATE
05	ECN-190839	Change Wire&Mylar Color	Lucas 08/30/19	Lucas 08/30/19	Ray 08/30/19

\*\*\*CONSTRUCTION:

1.CABLE:

\* UL21572(1P/32#+EAM)\*4+(1P/32#+A)+(4C/32#)+(1C/24#)+2EAB 85%  
 OD:4.8mm BLACK TPE JACKET.

\*\*\*CONNECTOR:

2.USB C/M:

\* USB TYPE C MALE SOLDER TYPE,PCB WITHOUT IC,  
 \* PINS: 30u GOLD PLATED OVER NICKEL.  
 \* INSULATOR: BLACK THERMOPLASTIC 94V-0 RATED.  
 \* SHELL: STEEL WITH GOLD PALTED.  
 \* CAPACITOR.  
 \* MOLDED: BLACK PVC 45P.

3.USB C/F:

\* USB TYPE C FEMALE SOLDER TYPE,PCB WITHOUT IC,  
 \* PINS: 30u GOLD PLATED OVER NICKEL.  
 \* INSULATOR: BLACK COLOR LCP 94V-0 RATED.  
 \* SHELL: STEEL WITH GOLD FLASH.

4.TEST:

\* CT: 2 ohm IS: 5M ohm



GT Contact CO.,LTD

NOTICE OF PROPRIETARY PROPERTY:  
 THE INFORMATION CONTAINED HEREIN IS THE PROPRIETARY PROPERTY OF GT Contact CO.,LTD THE POSSESSOR AGREES TO THE FOLLOWING:  
 (i) TO MAINTAIN THIS DOCUMENT IN CONFIDENCE  
 (ii) NOT TO REPRODUCE OR COPY IT  
 (iii) NOT TO REVEAL OR PUBLISH IT IN WHOLE OR PART  
 (iv) ALL RIGHTS RESERVED

TITLE USB 3.1 Type C Metal C2 Panel Jack Screw With Type C Plug						DRAWING NUMBER GT21C300-01-XX			REV. 05
	B	1:1	Lucas 12/14/16	Ray 12/14/16	Ray 12/14/16	X.X ± 0.5 X.XX ± 0.2	X.XXX ± 0.05 ANGLES ± 1°	mm	3/3
THIRD ANGLE PROJECTION	SIZE	SCALE	DRAW / DATE	CHECK / DATE	APPROVE / DATE	TOLERANCES		UNIT	SHEET

1

2

3

4