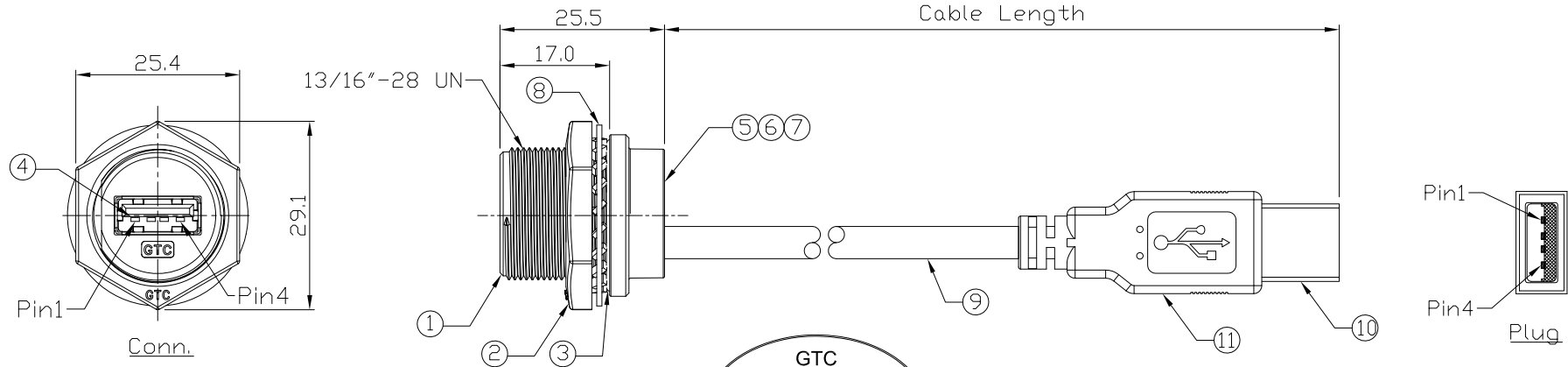


Notes: (Unless Otherwise Specified)

- 1. Waterproof Rate: IP68.
- 2. Recommend Panel Thickness: 0.8 to 6.0 mm.
- 3. Recommend Torque: 19~20 Kgf-cm.
- 4. Mating Cap P/N: GT2C213012/GT1C5331X2.
- 5. RoHS Compliant.

REV	ECN#	DESCRIPTION OF REVISION	DRAW BY DATE	CHECK BY DATE	APPROVE BY DATE
A0		Mass Production	Joyce 07/10/14	Lucas 07/10/14	Ray 07/10/14

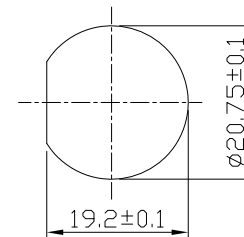


GTC
 DOC.CENTER.ISSUE
 JUL.10.2014
 ONLY FOR
 RELEASE

11	Over Mold	PVC Color: Black	1
10	USB-A Plug	Housing: Thermoplastic, Color: Black Contacts: Copper Alloy, Finish: Au Plated Shell: Cold Roll Steel, Finish: Ni Plated	1
9	Cable	UL2725 1P*28AWG+2C*24AWG+Al/My+D+B OD=5.0mm, Color: Black	1
8	Metal Washer	SUS Finish: -	1
7	EMI Shielded Plate	Copper Finish: Ni Plated	1
6	Glue	Epoxy Color: Black	
5	PCB	FR-4 Color: Green	1
4	USB-A Receptacle	Housing: Thermoplastic, Color: Black Contacts: Copper Alloy, Finish: Au Plated Shell: Copper Alloy, Finish: Ni Plated	1
3	O-Ring	Silicone Color: Red	1
2	Hex Nut	Zn Alloy Finish: Ni Plated	1
1	Housing	Zn Alloy Finish: Ni Plated	1
Item	Part Name	Material / Finish	Qty



Wiring Diagram



Recommend Panel Cut-Out

GT216300-05-01	1000 mm	±50
GT216300-05-Z9	900 mm	±40
GT216300-05-Z8	800 mm	±40
GT216300-05-Z7	700 mm	±40
GT216300-05-Z6	600 mm	±40
GT216300-05-Z5	500 mm	±40
GT216300-05-Z4	400 mm	±10
GT216300-05-Z3	300 mm	±10
GT216300-05-Z2	200 mm	±10
GT216300-05-Z1	100 mm	±10
Part No.	Cable Length	Tol.

GT Contact CO.,LTD

NOTICE OF PROPRIETARY PROPERTY:
 THE INFORMATION CONTAINED HEREIN IS THE PROPRIETARY PROPERTY OF GT CONTACT CO.,LTD THE POSSESSOR AGREES TO THE FOLLOWING:
 (A) TO MAINTAIN THIS DOCUMENT IN CONFIDENCE
 (B) NOT TO REPRODUCE OR COPY IT
 (C) NOT TO REVEAL OR PUBLISH IT IN WHOLE OR PART
 (D) ALL RIGHTS RESERVED

TITLE USB-A Metal C3 Panel Jack Screw + USB-A Plug With Cable						DRAWING NUMBER GT216300-05-XX			REV. A0	
THIRD ANGLE PROJECTION		SIZE	SCALE	DRAW / DATE	CHECK / DATE	APPROVE / DATE	TOLERANCES		UNIT	SHEET
DD NOT SCALE DRAWINGS		B	1:1	Joyce 07/10/14	Lucas 07/10/14	Ray 07/10/14	X.X ± 0.5 X.XX ± 0.2		mm	1/1
							X.XXX ± 0.05 ANGLES ± 1°			