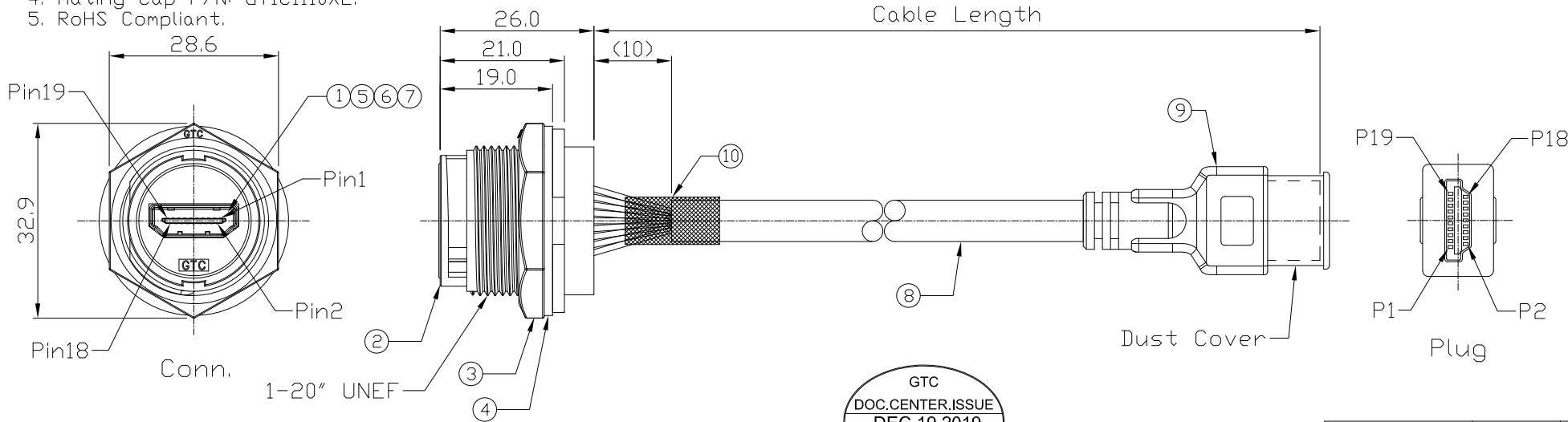


Notes: (Unless Otherwise Specified)

- 1. Waterproof Rate: IP67.
- 2. Recommend Panel Thickness: 0.8 to 6.0 mm.
- 3. Recommend Torque: 19~20 Kgf-cm.
- 4. Mating Cap P/N: GT1C1110X2.
- 5. RoHS Compliant.

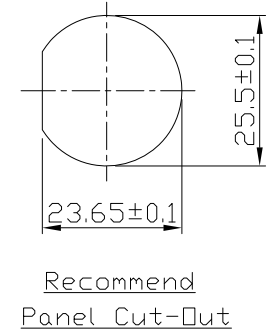
REV	ECN#	DESCRIPTION OF REVISION	DRAW BY DATE	CHECK BY DATE	APPROVE BY DATE
03	ECN-191205	Change Cable (REV: 1.3 => REV: 1.4)	Whitney 12/13/19	Lucas 12/13/19	Ray 12/13/19



GTC  
 DOC.CENTER.ISSUE  
 DEC.19.2019  
 ONLY FOR  
 RELEASE

Item	Part Name	Material / Finish	Q'ty
10	Shrink Tube	L=20mm Color: Black	1
9	HDMI Male	HDMI 19P Male IDC Type Color: Black	1
8	Cable	UL20276 [(28#/1PR+EAM)*5+(28#/4C)]+AB85% Color: Black, OD=7.3mm	1
7	Glue	Epoxy Color: Black	
6	Hold	Silicone Color: Black	1
5	PCB	FR-4 Color: Black	1
4	Gasket	Silicone Color: Black	1
3	Hex Nut	Thermoplastic Color: Black	1
2	Housing	Thermoplastic Color: Black	1
1	HDMI Female	Housing: Thermoplastic, Color: Black Contacts: Copper Alloy, Finish: Au Plated Shell: Copper Alloy, Finish: Ni Plated	1

Conn.	Color	Plug
1	White	1
2	Drain	2
3	Brown	3
4	White	4
5	Drain	5
6	Red	6
7	White	7
8	Drain	8
9	Green	9
10	White	10
11	Drain	11
12	Blue	12
13	Red	13
15	White	15
16	Purple	16
18	Black	18
14	White	14
17	Drain	17
19	Orange	19
Shell	Braid	Shell



Recommend  
Panel Cut-Out

Part No.	Cable Length	Tol.
GT1H1200-02-05	5000 mm	+150
GT1H1200-02-04	4000 mm	+150
GT1H1200-02-03	3000 mm	+100
GT1H1200-02-02	2000 mm	+100
GT1H1200-02-01	1000 mm	+50
GT1H1200-02-Z9	900 mm	+50
GT1H1200-02-Z8	800 mm	+50
GT1H1200-02-Z7	700 mm	+50
GT1H1200-02-Z6	600 mm	+50
GT1H1200-02-Z5	500 mm	+50
GT1H1200-02-Z4	400 mm	+50
GT1H1200-02-Z3	300 mm	+50
GT1H1200-02-Z2	200 mm	+25

Wiring Diagram

TITLE						DRAWING NUMBER			REV.	
HDMI C4 Plastic Panel Female Lock With HDMI Plug						GT1H1200-02-XX			03	
THIRD ANGLE PROJECTION	SIZE	SCALE	DRAW / DATE	CHECK / DATE	APPROVE / DATE	X.X ± 0.5	X.XXX ± 0.05	mm	1/1	
						TOLERANCES		UNIT	SHEET	

GT Contact CO.,LTD

NOTICE OF PROPRIETARY PROPERTY:  
 THE INFORMATION CONTAINED HEREIN IS THE PROPRIETARY PROPERTY OF GT Contact CO.,LTD THE POSSESSOR AGREES TO THE FOLLOWING:  
 (a) TO MAINTAIN THIS DOCUMENT IN CONFIDENCE  
 (b) NOT TO REPRODUCE OR COPY IT  
 (c) NOT TO REVEAL OR PUBLISH IT IN WHOLE OR PART  
 (d) ALL RIGHTS RESERVED